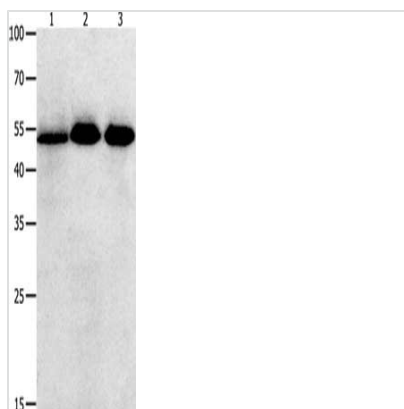




KLF5 Antibody

Product Code	CSB-PA210140
Storage	Upon receipt, store at -20°C or -80°C. Avoid repeated freeze.
Uniprot No.	Q13887
Immunogen	Synthetic peptide of Human KLF5
Raised In	Rabbit
Species Reactivity	Human, Mouse
Tested Applications	ELISA, WB; ELISA: 1:1000-1:5000, WB: 1:500-1:2000
Form	Liquid
Conjugate	Non-conjugated
Storage Buffer	-20°C, pH7.4 PBS, 0.05% NaN ₃ , 40% Glycerol
Purification Method	Antigen affinity purification
Isotype	IgG
Immunogen Species	Homo sapiens (Human)
Target Names	KLF5

Image



Gel: 10+12+15% SDS-PAGE, Lysate: 40 µg,
 Lane 1-3: Human lymphoma tissue, Human ovarian tissue, Human colon cancer tissue,
 Primary antibody: CSB-PA210140(KLF5 Antibody) at dilution 1/350, Secondary antibody: Goat anti rabbit IgG at 1/8000 dilution, Exposure time: 20 seconds

Usage

For Research Use Only. Not for use in diagnostic or therapeutic procedures.