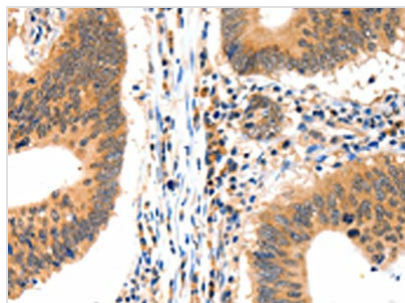




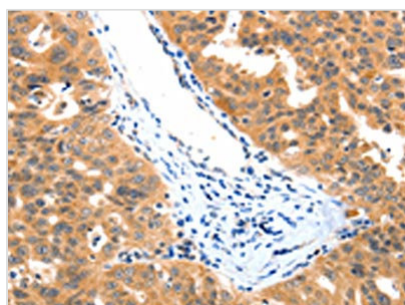
LRPPRC Antibody

Product Code	CSB-PA163355
Storage	Upon receipt, store at -20°C or -80°C. Avoid repeated freeze.
Uniprot No.	P42704
Immunogen	Synthetic peptide of Human LRPPRC
Raised In	Rabbit
Species Reactivity	Human,Mouse,Rat
Tested Applications	ELISA,IHC;ELISA:1:1000-1:2000,IHC:1:15-1:50
Form	Liquid
Conjugate	Non-conjugated
Storage Buffer	-20°C, pH7.4 PBS, 0.05% NaN ₃ , 40% Glycerol
Purification Method	Antigen affinity purification
Isotype	IgG
Immunogen Species	Homo sapiens (Human)
Target Names	LRPPRC

Image



The image on the left is immunohistochemistry of paraffin-embedded Human colon cancer tissue using CSB-PA163355(LRPPRC Antibody) at dilution 1/15, on the right is treated with synthetic peptide. (Original magnification: x200)



The image on the left is immunohistochemistry of paraffin-embedded Human ovarian cancer tissue using CSB-PA163355(LRPPRC Antibody) at dilution 1/15, on the right is treated with synthetic peptide. (Original magnification: x200)

Usage

For Research Use Only. Not for use in diagnostic or therapeutic procedures.