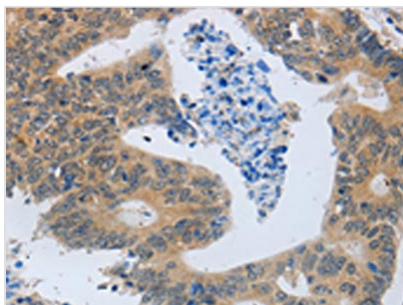




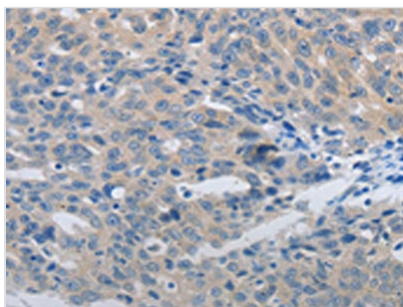
MMP8 Antibody

Product Code	CSB-PA670355
Storage	Upon receipt, store at -20°C or -80°C. Avoid repeated freeze.
Uniprot No.	P22894
Immunogen	Synthetic peptide of Human MMP8
Raised In	Rabbit
Species Reactivity	Human
Tested Applications	ELISA, WB, IHC; ELISA: 1:2000-1:5000, WB: 1:500-1:2000, IHC: 1:25-1:100
Form	Liquid
Conjugate	Non-conjugated
Storage Buffer	-20°C, pH7.4 PBS, 0.05% NaN ₃ , 40% Glycerol
Purification Method	Antigen affinity purification
Isotype	IgG
Alias	matrix metalloproteinase 8 (neutrophil collagenase)
Immunogen Species	Homo sapiens (Human)
Target Names	MMP8

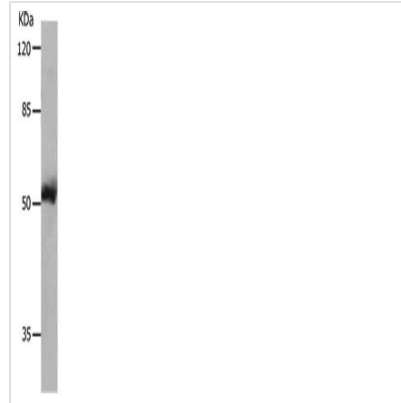
Image



The image is immunohistochemistry of paraffin-embedded Human colon cancer tissue using CSB-PA670355(MMP8 Antibody) at dilution 1/45. (Original magnification: x200)



The image is immunohistochemistry of paraffin-embedded Human ovarian cancer tissue using CSB-PA670355(MMP8 Antibody) at dilution 1/45. (Original magnification: x200)



Gel: 8%SDS-PAGE, Lysate: 40 μ g, Lane: 231 cells, Primary antibody: CSB-PA670355(MMP8 Antibody) at dilution 1/800, Secondary antibody: Goat anti rabbit IgG at 1/8000 dilution, Exposure time: 10 seconds

Usage

For Research Use Only. Not for use in diagnostic or therapeutic procedures.