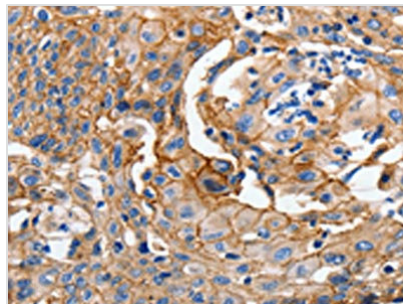




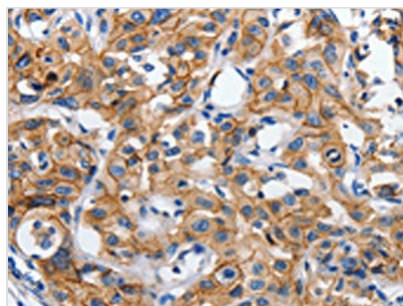
CDH1 Antibody

Product Code	CSB-PA218378
Storage	Upon receipt, store at -20°C or -80°C. Avoid repeated freeze.
Uniprot No.	P12830
Immunogen	Synthetic peptide of Human CDH1
Raised In	Rabbit
Species Reactivity	Human,Mouse,Rat
Tested Applications	ELISA,WB,IHC;ELISA:1:2000-1:10000,WB:1:1000-1:5000,IHC:1:50-1:200
Form	Liquid
Conjugate	Non-conjugated
Storage Buffer	-20°C, pH7.4 PBS, 0.05% NaN ₃ , 40% Glycerol
Purification Method	Antigen affinity purification
Isotype	IgG
Immunogen Species	Homo sapiens (Human)
Target Names	CDH1

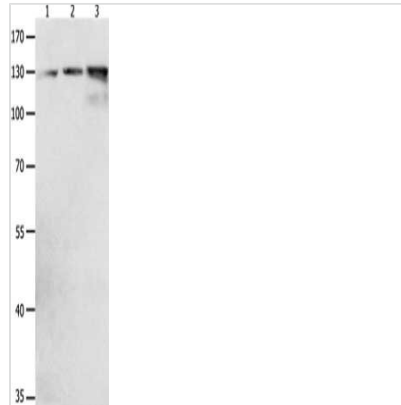
Image



The image on the left is immunohistochemistry of paraffin-embedded Human cervical cancer tissue using CSB-PA218378(CDH1 Antibody) at dilution 1/100, on the right is treated with synthetic peptide. (Original magnification: X200)



The image on the left is immunohistochemistry of paraffin-embedded Human lung cancer tissue using CSB-PA218378(CDH1 Antibody) at dilution 1/100, on the right is treated with synthetic peptide. (Original magnification: X200)



Gel: 8%SDS-PAGE, Lysate: 40 μ g, Lane 1-3:
Human brain malignant glioma tissue, Human
colon cancer tissue, mouse pancreas tissue,
Primary antibody: CSB-PA218378(CDH1
Antibody) at dilution 1/1950, Secondary
antibody: Goat anti rabbit IgG at 1/8000 dilution,
Exposure time: 3 seconds

Usage

For Research Use Only. Not for use in diagnostic or therapeutic procedures.