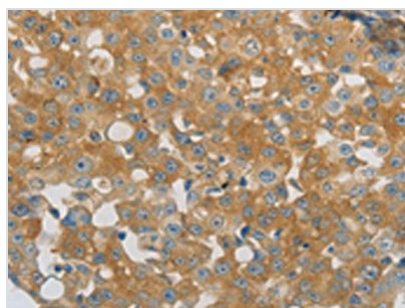




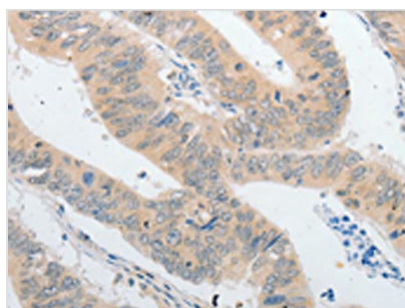
PPAP2A Antibody

| | |
|----------------------------|-----------------------------------------------------------------|
| Product Code | CSB-PA918814 |
| Storage | Upon receipt, store at -20°C or -80°C. Avoid repeated freeze. |
| Uniprot No. | O14494 |
| Immunogen | Synthetic peptide of Human PPAP2A |
| Raised In | Rabbit |
| Species Reactivity | Human,Mouse,Rat |
| Tested Applications | ELISA,WB,IHC;ELISA:1:2000-1:5000,WB:1:500-1:2000,IHC:1:25-1:100 |
| Form | Liquid |
| Conjugate | Non-conjugated |
| Storage Buffer | -20°C, pH7.4 PBS, 0.05% NaN ₃ , 40% Glycerol |
| Purification Method | Antigen affinity purification |
| Isotype | IgG |
| Immunogen Species | Homo sapiens (Human) |
| Target Names | PLPP1 |

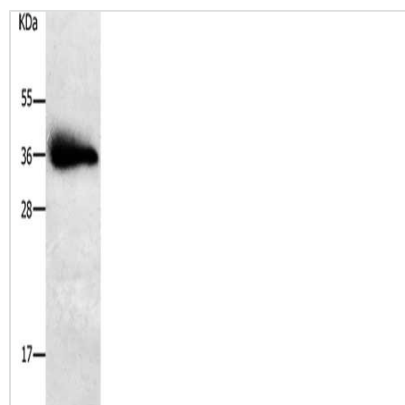
Image



The image on the left is immunohistochemistry of paraffin-embedded Human breast cancer tissue using CSB-PA918814(PPAP2A Antibody) at dilution 1/40, on the right is treated with synthetic peptide. (Original magnification: x200)



The image on the left is immunohistochemistry of paraffin-embedded Human colon cancer tissue using CSB-PA918814(PPAP2A Antibody) at dilution 1/40, on the right is treated with synthetic peptide. (Original magnification: x200)



Gel: 10%SDS-PAGE, Lysate: 30 μ g, Lane:
Human liver cancer tissue, Primary antibody:
CSB-PA918814(PPAP2A Antibody) at dilution
1/650, Secondary antibody: Goat anti rabbit IgG
at 1/8000 dilution, Exposure time: 1 second