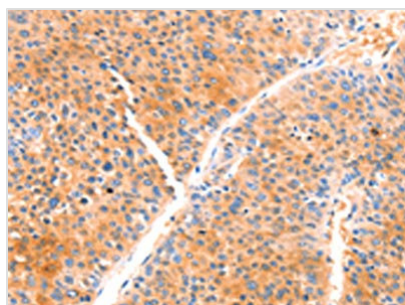




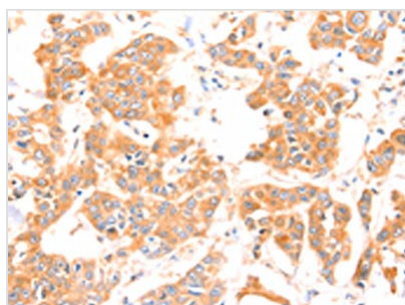
PRDX2 Antibody

Product Code	CSB-PA297520
Storage	Upon receipt, store at -20°C or -80°C. Avoid repeated freeze.
Uniprot No.	P32119
Immunogen	Synthetic peptide of Human PRDX2
Raised In	Rabbit
Species Reactivity	Human,Mouse,Rat
Tested Applications	ELISA,WB,IHC;ELISA:1:2000-1:5000,WB:1:500-1:2000,IHC:1:100-1:300
Form	Liquid
Conjugate	Non-conjugated
Storage Buffer	-20°C, pH7.4 PBS, 0.05% NaN ₃ , 40% Glycerol
Purification Method	Antigen affinity purification
Isotype	IgG
Immunogen Species	Homo sapiens (Human)
Target Names	PRDX2

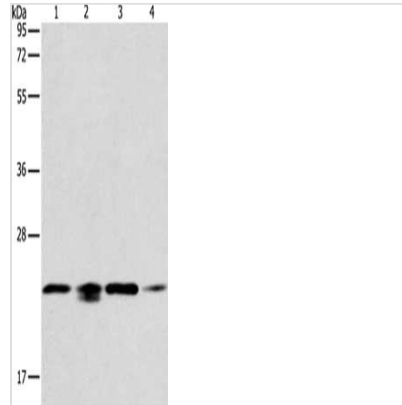
Image



The image on the left is immunohistochemistry of paraffin-embedded Human liver cancer tissue using CSB-PA297520(PRDX2 Antibody) at dilution 1/80, on the right is treated with synthetic peptide. (Original magnification: x200)



The image on the left is immunohistochemistry of paraffin-embedded Human breast cancer tissue using CSB-PA297520(PRDX2 Antibody) at dilution 1/80, on the right is treated with synthetic peptide. (Original magnification: x200)



Gel: 12%SDS-PAGE, Lysate: 40 μ g, Lane 1-4:
293T cells, hela cells, PC3 cells, NIH/3T3 cells,
Primary antibody: CSB-PA297520(PRDX2
Antibody) at dilution 1/750, Secondary antibody:
Goat anti rabbit IgG at 1/8000 dilution, Exposure
time: 10 seconds

Usage

For Research Use Only. Not for use in diagnostic or therapeutic procedures.