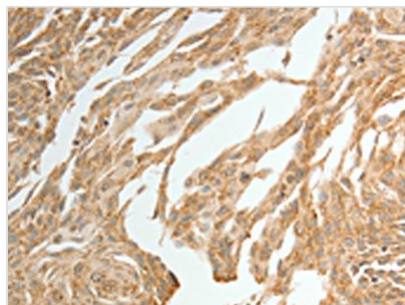




# TWIST1 Antibody

<b>Product Code</b>	CSB-PA245152
<b>Storage</b>	Upon receipt, store at -20°C or -80°C. Avoid repeated freeze.
<b>Uniprot No.</b>	Q15672
<b>Immunogen</b>	Synthetic peptide of Human TWIST1
<b>Raised In</b>	Rabbit
<b>Species Reactivity</b>	Human, Mouse
<b>Tested Applications</b>	ELISA, IHC; ELISA: 1:1000-1:5000, IHC: 1:15-1:50
<b>Form</b>	Liquid
<b>Conjugate</b>	Non-conjugated
<b>Storage Buffer</b>	-20°C, pH7.4 PBS, 0.05% NaN <sub>3</sub> , 40% Glycerol
<b>Purification Method</b>	Antigen affinity purification
<b>Isotype</b>	IgG
<b>Alias</b>	twist basic helix-loop-helix transcription factor 1
<b>Immunogen Species</b>	Homo sapiens (Human)
<b>Target Names</b>	TWIST1

## Image



The image is immunohistochemistry of paraffin-embedded Human cervical cancer tissue using CSB-PA245152 (TWIST1 Antibody) at dilution 1/15. (Original magnification: x200)

## Usage

For Research Use Only. Not for use in diagnostic or therapeutic procedures.