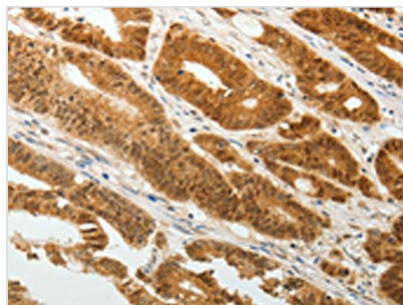




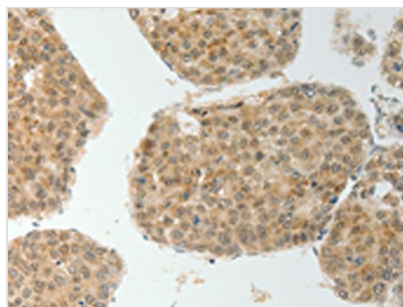
TWIST1 Antibody

| | |
|----------------------------|---|
| Product Code | CSB-PA084858 |
| Storage | Upon receipt, store at -20°C or -80°C. Avoid repeated freeze. |
| Uniprot No. | Q15672 |
| Immunogen | Synthetic peptide of Human TWIST1 |
| Raised In | Rabbit |
| Species Reactivity | Human, Mouse |
| Tested Applications | ELISA, IHC; ELISA: 1:2000-1:5000, IHC: 1:25-1:100 |
| Form | Liquid |
| Conjugate | Non-conjugated |
| Storage Buffer | -20°C, pH7.4 PBS, 0.05% NaN ₃ , 40% Glycerol |
| Purification Method | Antigen affinity purification |
| Isotype | IgG |
| Alias | twist basic helix-loop-helix transcription factor 1 |
| Immunogen Species | Homo sapiens (Human) |
| Target Names | TWIST1 |

Image



The image is immunohistochemistry of paraffin-embedded Human colon cancer tissue using CSB-PA084858(TWIST1 Antibody) at dilution 1/20. (Original magnification: x200)



The image is immunohistochemistry of paraffin-embedded Human liver cancer tissue using CSB-PA084858(TWIST1 Antibody) at dilution 1/20. (Original magnification: x200)

Usage

For Research Use Only. Not for use in diagnostic or therapeutic procedures.