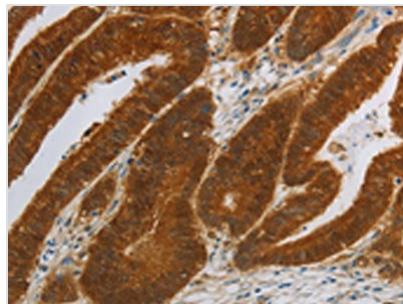




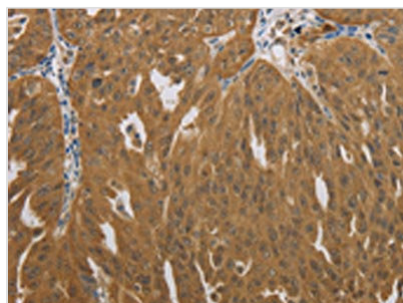
NIT2 Antibody

Product Code	CSB-PA187627
Storage	Upon receipt, store at -20°C or -80°C. Avoid repeated freeze.
Uniprot No.	Q9NQR4
Immunogen	Synthetic peptide of Human NIT2
Raised In	Rabbit
Species Reactivity	Human,Mouse
Tested Applications	ELISA,WB,IHC;ELISA:1:2000-1:10000,WB:1:1000-1:5000,IHC:1:50-1:200
Form	Liquid
Conjugate	Non-conjugated
Storage Buffer	-20°C, pH7.4 PBS, 0.05% NaN ₃ , 40% Glycerol
Purification Method	Antigen affinity purification
Isotype	IgG
Immunogen Species	Homo sapiens (Human)
Target Names	NIT2

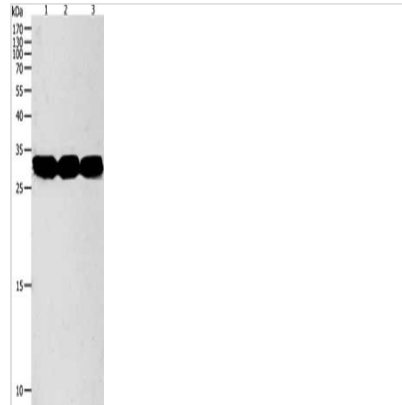
Image



The image on the left is immunohistochemistry of paraffin-embedded Human colon cancer tissue using CSB-PA187627(NIT2 Antibody) at dilution 1/40, on the right is treated with synthetic peptide. (Original magnification: x200)



The image on the left is immunohistochemistry of paraffin-embedded Human ovarian cancer tissue using CSB-PA187627(NIT2 Antibody) at dilution 1/40, on the right is treated with synthetic peptide. (Original magnification: x200)



Gel: 10%SDS-PAGE, Lysate: 40 μ g, Lane 1-3:
Mouse liver tissue, Mouse kidney tissue,
RAW264.7 cells, Primary antibody: CSB-
PA187627(NIT2 Antibody) at dilution 1/950,
Secondary antibody: Goat anti rabbit IgG at
1/8000 dilution, Exposure time: 90 seconds

Usage

For Research Use Only. Not for use in diagnostic or therapeutic procedures.