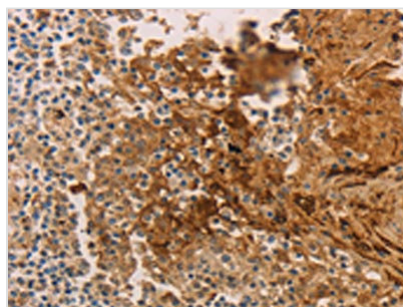




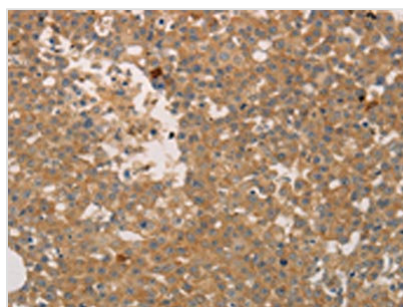
# ADCYAP1R1 Antibody

<b>Product Code</b>	CSB-PA207627
<b>Storage</b>	Upon receipt, store at -20°C or -80°C. Avoid repeated freeze.
<b>Uniprot No.</b>	P41586
<b>Immunogen</b>	Synthetic peptide of Human ADCYAP1R1
<b>Raised In</b>	Rabbit
<b>Species Reactivity</b>	Human,Mouse
<b>Tested Applications</b>	ELISA,WB,IHC;ELISA:1:2000-1:10000,WB:1:1000-1:5000,IHC:1:50-1:200
<b>Form</b>	Liquid
<b>Conjugate</b>	Non-conjugated
<b>Storage Buffer</b>	Supplied at 2.2mg/mL in phosphate buffered saline (without Mg <sup>2+</sup> and Ca <sup>2+</sup> ), pH 7.3, 0.05% sodium azide and 50% glycerol.
<b>Purification Method</b>	Antigen affinity purification
<b>Isotype</b>	IgG
<b>Product Type</b>	Polyclonal Antibody
<b>Immunogen Species</b>	Homo sapiens (Human)
<b>Target Names</b>	ADCYAP1R1

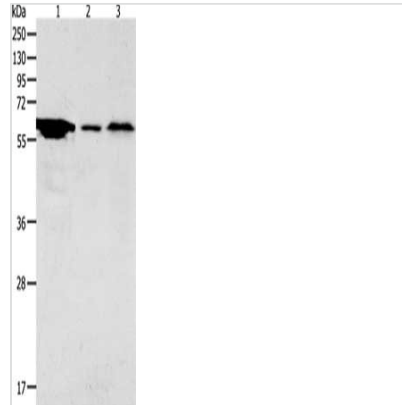
## Image



The image on the left is immunohistochemistry of paraffin-embedded Human tonsil tissue using CSB-PA207627(ADCYAP1R1 Antibody) at dilution 1/70, on the right is treated with synthetic peptide. (Original magnification: x200)



The image on the left is immunohistochemistry of paraffin-embedded Human breast cancer tissue using CSB-PA207627(ADCYAP1R1 Antibody) at dilution 1/70, on the right is treated with synthetic peptide. (Original magnification: x200)



Gel: 10%SDS-PAGE, Lysate: 40  $\mu$ g, Lane 1-3: Hela cells, Mouse stomach tissue, Mouse brain tissue, Primary antibody: CSB-PA207627(ADCYAP1R1 Antibody) at dilution 1/2000, Secondary antibody: Goat anti rabbit IgG at 1/8000 dilution, Exposure time: 5 minutes

**Usage**

For Research Use Only. Not for use in diagnostic or therapeutic procedures.