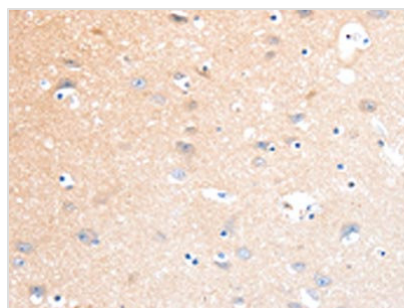




SLC22A17 Antibody

Product Code	CSB-PA910337
Storage	Upon receipt, store at -20°C or -80°C. Avoid repeated freeze.
Uniprot No.	Q8WUG5
Immunogen	Synthetic peptide of Human SLC22A17
Raised In	Rabbit
Species Reactivity	Human,Mouse,Rat
Tested Applications	ELISA,IHC;ELISA:1:1000-1:5000,IHC:1:25-1:100
Form	Liquid
Conjugate	Non-conjugated
Storage Buffer	-20°C, pH7.4 PBS, 0.05% NaN ₃ , 40% Glycerol
Purification Method	Antigen affinity purification
Isotype	IgG
Immunogen Species	Homo sapiens (Human)
Target Names	SLC22A17

Image



The image on the left is immunohistochemistry of paraffin-embedded Human brain tissue using CSB-PA910337(SLC22A17 Antibody) at dilution 1/40, on the right is treated with synthetic peptide. (Original magnification: x200)