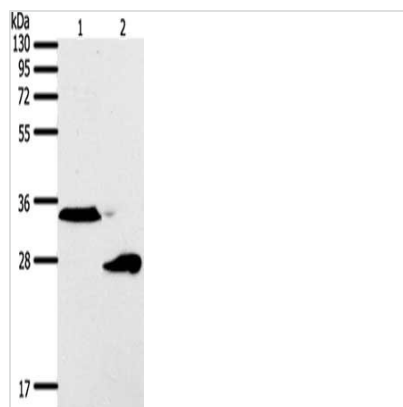




SFTPA1 Antibody

Product Code	CSB-PA276859
Storage	Upon receipt, store at -20°C or -80°C. Avoid repeated freeze.
Uniprot No.	Q8IWL2
Immunogen	Synthetic peptide of Human SFTPA1
Raised In	Rabbit
Species Reactivity	Human,Rat
Tested Applications	ELISA,WB;ELISA:1:1000-1:5000,WB:1:200-1:1000
Form	Liquid
Conjugate	Non-conjugated
Storage Buffer	-20°C, pH7.4 PBS, 0.05% NaN ₃ , 40% Glycerol
Purification Method	Antigen affinity purification
Isotype	IgG
Immunogen Species	Homo sapiens (Human)
Target Names	SFTPA1

Image



Gel: 12%SDS-PAGE, Lysate: 50 µg, Lane 1-2: A549 cells, human fetal lung tissue, Primary antibody: CSB-PA276859(SFTPA1 Antibody) at dilution 1/300, Secondary antibody: Goat anti rabbit IgG at 1/8000 dilution, Exposure time: 1 minute