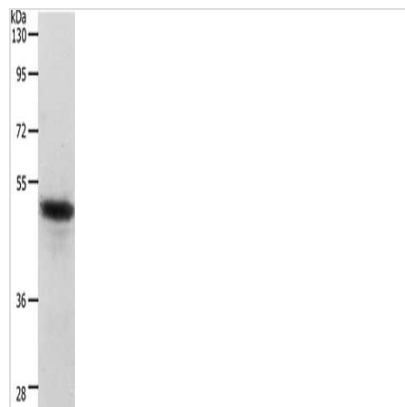




CERS2 Antibody

| | |
|----------------------------|---|
| Product Code | CSB-PA785064 |
| Storage | Upon receipt, store at -20°C or -80°C. Avoid repeated freeze. |
| Uniprot No. | Q96G23 |
| Immunogen | Synthetic peptide of Human CERS2 |
| Raised In | Rabbit |
| Species Reactivity | Human, Mouse |
| Tested Applications | ELISA, WB; ELISA: 1:2000-1:5000, WB: 1:500-1:2000 |
| Form | Liquid |
| Conjugate | Non-conjugated |
| Storage Buffer | -20°C, pH7.4 PBS, 0.05% NaN ₃ , 40% Glycerol |
| Purification Method | Antigen affinity purification |
| Isotype | IgG |
| Immunogen Species | Homo sapiens (Human) |
| Target Names | CERS2 |

Image



Gel: 10%SDS-PAGE, Lysate: 40 µg, Lane: Human liver cancer tissue, Primary antibody: CSB-PA785064(CERS2 Antibody) at dilution 1/750, Secondary antibody: Goat anti rabbit IgG at 1/8000 dilution, Exposure time: 40 seconds

Usage

For Research Use Only. Not for use in diagnostic or therapeutic procedures.