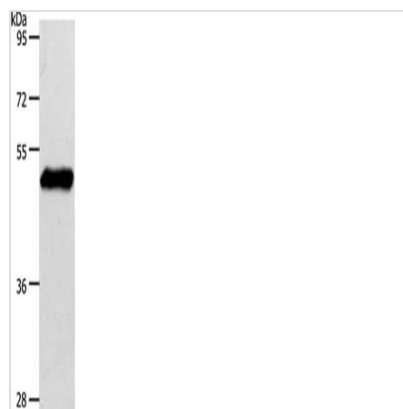




S1PR1 Antibody

Product Code	CSB-PA241754
Storage	Upon receipt, store at -20°C or -80°C. Avoid repeated freeze.
Uniprot No.	P21453
Immunogen	Synthetic peptide of Human S1PR1
Raised In	Rabbit
Species Reactivity	Human,Mouse,Rat
Tested Applications	ELISA,WB;ELISA:1:2000-1:5000,WB:1:500-1:2000
Form	Liquid
Conjugate	Non-conjugated
Storage Buffer	-20°C, pH7.4 PBS, 0.05% NaN ₃ , 40% Glycerol
Purification Method	Antigen affinity purification
Isotype	IgG
Immunogen Species	Homo sapiens (Human)
Target Names	S1PR1

Image



Gel: 10%SDS-PAGE, Lysate: 40 µg, Lane: Mouse brain tissue, Primary antibody: CSB-PA241754(S1PR1 Antibody) at dilution 1/750, Secondary antibody: Goat anti rabbit IgG at 1/8000 dilution, Exposure time: 10 seconds

Usage For Research Use Only. Not for use in diagnostic or therapeutic procedures.