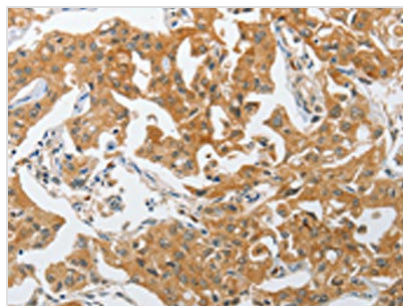




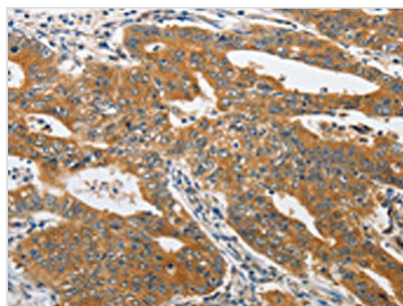
PIK3R3 Antibody

Product Code	CSB-PA159945
Storage	Upon receipt, store at -20°C or -80°C. Avoid repeated freeze.
Uniprot No.	Q92569
Immunogen	Synthetic peptide of Human PIK3R3
Raised In	Rabbit
Species Reactivity	Human,Mouse,Rat
Tested Applications	ELISA,WB,IHC;ELISA:1:2000-1:5000,WB:1:500-1:2000,IHC:1:25-1:100
Form	Liquid
Conjugate	Non-conjugated
Storage Buffer	-20°C, pH7.4 PBS, 0.05% NaN ₃ , 40% Glycerol
Purification Method	Antigen affinity purification
Isotype	IgG
Immunogen Species	Homo sapiens (Human)
Target Names	PIK3R3

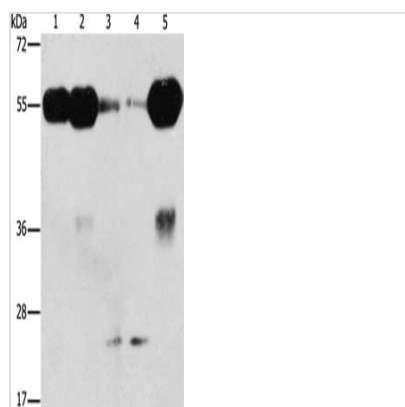
Image



The image on the left is immunohistochemistry of paraffin-embedded Human lung cancer tissue using CSB-PA159945(PIK3R3 Antibody) at dilution 1/25, on the right is treated with synthetic peptide. (Original magnification: x200)



The image on the left is immunohistochemistry of paraffin-embedded Human gastric cancer tissue using CSB-PA159945(PIK3R3 Antibody) at dilution 1/25, on the right is treated with synthetic peptide. (Original magnification: x200)



Gel: 10%SDS-PAGE, Lysate: 40 μ g, Lane 1-5:
 Mouse brain tissue, human fetal brain tissue,
 mouse testis tissue, hela cells, human fetal
 kidney tissue, Primary antibody: CSB-
 PA159945(PIK3R3 Antibody) at dilution 1/250,
 Secondary antibody: Goat anti rabbit IgG at
 1/8000 dilution, Exposure time: 2 minutes