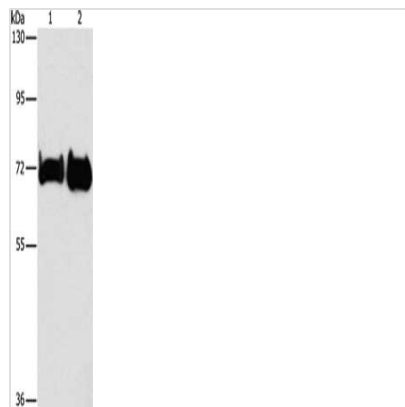




# PCK1 Antibody

|                            |   |
|----------------------------|---|
| <b>Product Code</b>        | CSB-PA826844  |
| <b>Storage</b>             | Upon receipt, store at -20°C or -80°C. Avoid repeated freeze. |
| <b>Uniprot No.</b>         | P35558  |
| <b>Immunogen</b>           | Synthetic peptide of Human PCK1                               |
| <b>Raised In</b>           | Rabbit  |
| <b>Species Reactivity</b>  | Human,Mouse,Rat   |
| <b>Tested Applications</b> | ELISA,WB;ELISA:1:2000-1:5000,WB:1:500-1:2000                  |
| <b>Form</b>                | Liquid  |
| <b>Conjugate</b>           | Non-conjugated  |
| <b>Storage Buffer</b>      | -20°C, pH7.4 PBS, 0.05% NaN <sub>3</sub> , 40% Glycerol       |
| <b>Purification Method</b> | Antigen affinity purification                                 |
| <b>Isotype</b>             | IgG   |
| <b>Immunogen Species</b>   | Homo sapiens (Human)  |
| <b>Target Names</b>        | PCK1  |

## Image



Gel: 6%SDS-PAGE, Lysate: 40 µg, Lane 1-2: Mouse liver tissue, Mouse kidney tissue, Primary antibody: CSB-PA826844(PCK1 Antibody) at dilution 1/362.5, Secondary antibody: Goat anti rabbit IgG at 1/8000 dilution, Exposure time: 1 minute

## Usage

For Research Use Only. Not for use in diagnostic or therapeutic procedures.