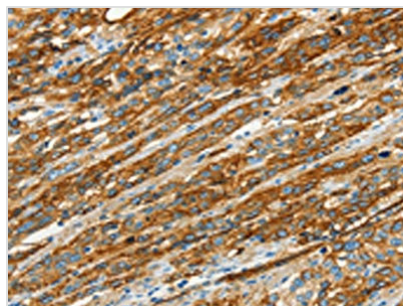




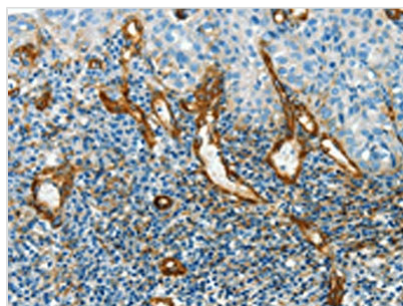
CAV1 Antibody

Product Code	CSB-PA035530
Storage	Upon receipt, store at -20°C or -80°C. Avoid repeated freeze.
Uniprot No.	Q03135
Immunogen	Synthetic peptide of Human CAV1
Raised In	Rabbit
Species Reactivity	Human,Mouse,Rat
Tested Applications	ELISA,WB,IHC;ELISA:1:2000-1:10000,WB:1:1000-1:5000,IHC:1:50-1:200
Form	Liquid
Conjugate	Non-conjugated
Storage Buffer	-20°C, pH7.4 PBS, 0.05% NaN ₃ , 40% Glycerol
Purification Method	Antigen affinity purification
Isotype	IgG
Immunogen Species	Homo sapiens (Human)
Target Names	CAV1

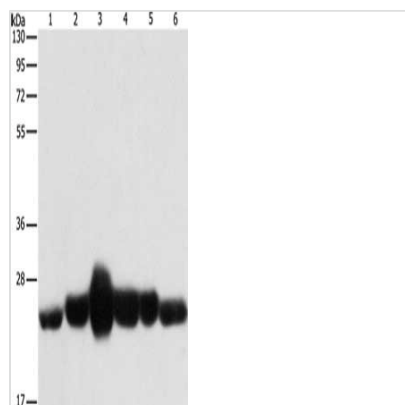
Image



The image on the left is immunohistochemistry of paraffin-embedded Human esophagus cancer tissue using CSB-PA035530(CAV1 Antibody) at dilution 1/40, on the right is treated with synthetic peptide. (Original magnification: x200)



The image on the left is immunohistochemistry of paraffin-embedded Human cervical cancer tissue using CSB-PA035530(CAV1 Antibody) at dilution 1/40, on the right is treated with synthetic peptide. (Original magnification: x200)



Gel: 10%SDS-PAGE, Lysate: 40 μ g, Lane 1-6:
 Human fetal muscle tissue, Human fetal lung
 tissue, Human leiomyosarcoma tissue, mouse
 lung, Mouse heart tissue, NIH/3T3 cells, Primary
 antibody: CSB-PA035530(CAV1 Antibody) at
 dilution 1/550, Secondary antibody: Goat anti
 rabbit IgG at 1/8000 dilution, Exposure time: 10
 seconds