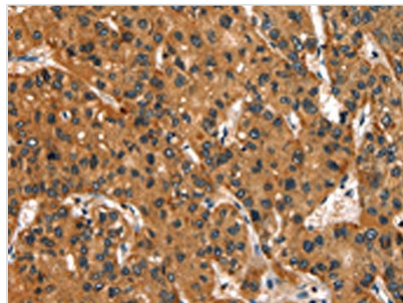




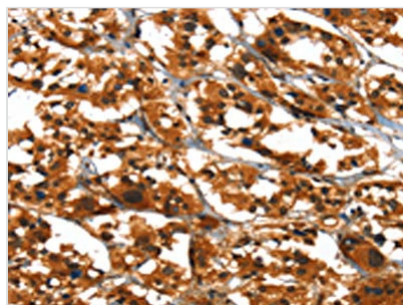
SLC6A4 Antibody

Product Code	CSB-PA363564
Storage	Upon receipt, store at -20°C or -80°C. Avoid repeated freeze.
Uniprot No.	P31645
Immunogen	Synthetic peptide of Human SLC6A4
Raised In	Rabbit
Species Reactivity	Human,Mouse,Rat
Tested Applications	ELISA,IHC;ELISA:1:2000-1:5000,IHC:1:50-1:200
Form	Liquid
Conjugate	Non-conjugated
Storage Buffer	-20°C, pH7.4 PBS, 0.05% NaN ₃ , 40% Glycerol
Purification Method	Antigen affinity purification
Isotype	IgG
Alias	solute carrier family 6 (neurotransmitter transporter), member 4
Immunogen Species	Homo sapiens (Human)
Target Names	SLC6A4

Image



The image is immunohistochemistry of paraffin-embedded Human liver cancer tissue using CSB-PA363564(SLC6A4 Antibody) at dilution 1/50. (Original magnification: x200)



The image is immunohistochemistry of paraffin-embedded Human thyroid cancer tissue using CSB-PA363564(SLC6A4 Antibody) at dilution 1/50. (Original magnification: x200)

Usage

For Research Use Only. Not for use in diagnostic or therapeutic procedures.