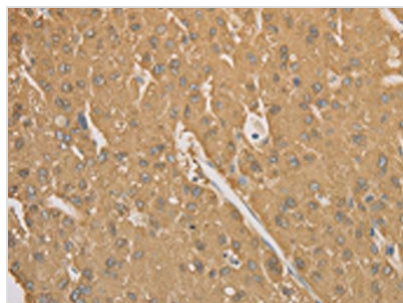




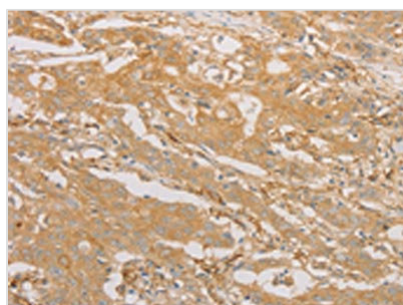
CD40 Antibody

Product Code	CSB-PA215588
Storage	Upon receipt, store at -20°C or -80°C. Avoid repeated freeze.
Uniprot No.	P25942
Immunogen	Synthetic peptide of Human CD40
Raised In	Rabbit
Species Reactivity	Human, Mouse
Tested Applications	ELISA, IHC; ELISA: 1:2000-1:10000, IHC: 1:100-1:300
Form	Liquid
Conjugate	Non-conjugated
Storage Buffer	-20°C, pH7.4 PBS, 0.05% NaN ₃ , 40% Glycerol
Purification Method	Antigen affinity purification
Isotype	IgG
Immunogen Species	Homo sapiens (Human)
Target Names	CD40

Image



The image on the left is immunohistochemistry of paraffin-embedded Human liver cancer tissue using CSB-PA215588 (CD40 Antibody) at dilution 1/70, on the right is treated with synthetic peptide. (Original magnification: x200)



The image on the left is immunohistochemistry of paraffin-embedded Human gastric cancer tissue using CSB-PA215588 (CD40 Antibody) at dilution 1/70, on the right is treated with synthetic peptide. (Original magnification: x200)

Usage

For Research Use Only. Not for use in diagnostic or therapeutic procedures.