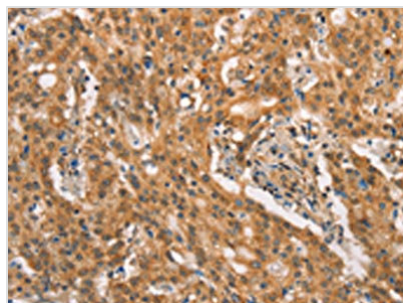




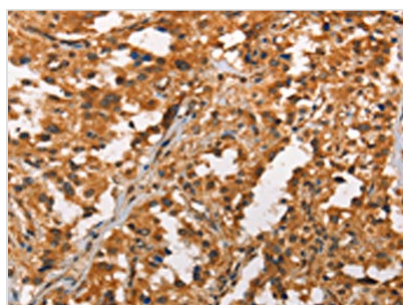
# CRKL Antibody

<b>Product Code</b>	CSB-PA831164
<b>Storage</b>	Upon receipt, store at -20°C or -80°C. Avoid repeated freeze.
<b>Uniprot No.</b>	P46109
<b>Immunogen</b>	Synthetic peptide of Human CRKL
<b>Raised In</b>	Rabbit
<b>Species Reactivity</b>	Human,Mouse,Rat
<b>Tested Applications</b>	ELISA,WB,IHC;ELISA:1:2000-1:5000,WB:1:500-1:2000,IHC:1:25-1:100
<b>Form</b>	Liquid
<b>Conjugate</b>	Non-conjugated
<b>Storage Buffer</b>	-20°C, pH7.4 PBS, 0.05% NaN <sub>3</sub> , 40% Glycerol
<b>Purification Method</b>	Antigen affinity purification
<b>Isotype</b>	IgG
<b>Immunogen Species</b>	Homo sapiens (Human)
<b>Target Names</b>	CRKL

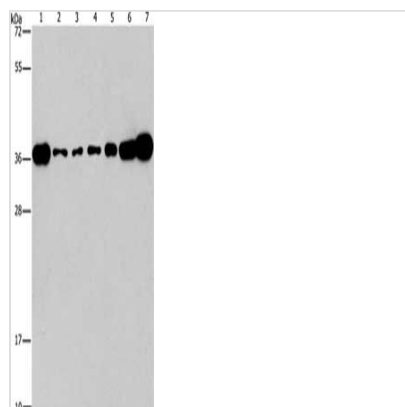
## Image



The image on the left is immunohistochemistry of paraffin-embedded Human gastric cancer tissue using CSB-PA831164(CRKL Antibody) at dilution 1/25, on the right is treated with synthetic peptide. (Original magnification: x200)



The image on the left is immunohistochemistry of paraffin-embedded Human thyroid cancer tissue using CSB-PA831164(CRKL Antibody) at dilution 1/25, on the right is treated with synthetic peptide. (Original magnification: x200)



Gel: 15%SDS-PAGE, Lysate: 40  $\mu$ g, Lane 1-7:  
 Lovo cells, A431 cells, A549 cells, hela cells,  
 hepG2 cells, Raji cells, mouse brain tissue,  
 Primary antibody: CSB-PA831164(CRKL  
 Antibody) at dilution 1/550, Secondary antibody:  
 Goat anti rabbit IgG at 1/8000 dilution, Exposure  
 time: 1 minute