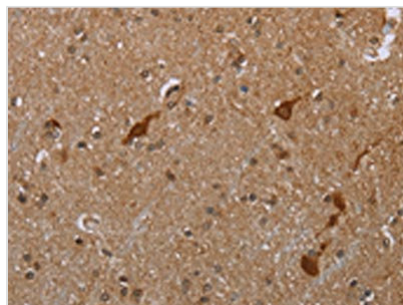




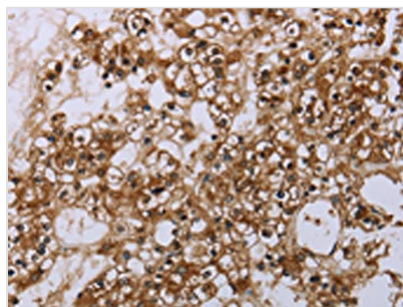
CASP8AP2 Antibody

Product Code	CSB-PA148605
Storage	Upon receipt, store at -20°C or -80°C. Avoid repeated freeze.
Uniprot No.	Q9UKL3
Immunogen	Synthetic peptide of Human CASP8AP2
Raised In	Rabbit
Species Reactivity	Human,Mouse
Tested Applications	ELISA,WB,IHC;ELISA:1:1000-1:2000,WB:1:200-1:1000,IHC:1:25-1:100
Form	Liquid
Conjugate	Non-conjugated
Storage Buffer	-20°C, pH7.4 PBS, 0.05% NaN ₃ , 40% Glycerol
Purification Method	Antigen affinity purification
Isotype	IgG
Alias	caspase 8 associated protein 2
Immunogen Species	Homo sapiens (Human)
Target Names	CASP8AP2

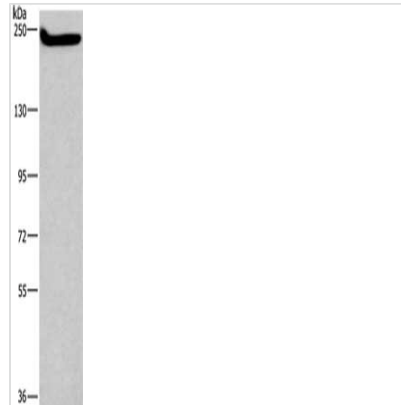
Image



The image is immunohistochemistry of paraffin-embedded human brain tissue using CSB-PA148605(CASP8AP2 Antibody) at dilution 1/20. (Original magnification: x200)



The image is immunohistochemistry of paraffin-embedded human prostate cancer tissue using CSB-PA148605(CASP8AP2 Antibody) at dilution 1/20. (Original magnification: x200)



Gel: 6%SDS-PAGE, Lysate: 40 μ g, Lane: HeLa cells, Primary antibody: CSB-PA148605(CASP8AP2 Antibody) at dilution 1/250, Secondary antibody: Goat anti rabbit IgG at 1/8000 dilution, Exposure time: 2 minutes

Usage

For Research Use Only. Not for use in diagnostic or therapeutic procedures.