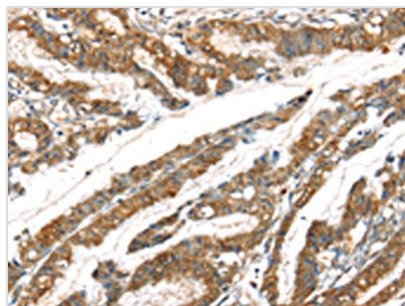




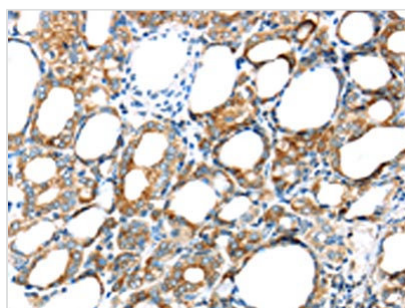
# GPD2 Antibody

<b>Product Code</b>	CSB-PA437630
<b>Storage</b>	Upon receipt, store at -20°C or -80°C. Avoid repeated freeze.
<b>Uniprot No.</b>	P43304
<b>Immunogen</b>	Synthetic peptide of Human GPD2
<b>Raised In</b>	Rabbit
<b>Species Reactivity</b>	Human,Mouse,Rat
<b>Tested Applications</b>	ELISA,WB,IHC;ELISA:1:2000-1:5000,WB:1:500-1:2000,IHC:1:20-1:100
<b>Form</b>	Liquid
<b>Conjugate</b>	Non-conjugated
<b>Storage Buffer</b>	-20°C, pH7.4 PBS, 0.05% NaN <sub>3</sub> , 40% Glycerol
<b>Purification Method</b>	Antigen affinity purification
<b>Isotype</b>	IgG
<b>Immunogen Species</b>	Homo sapiens (Human)
<b>Target Names</b>	GPD2

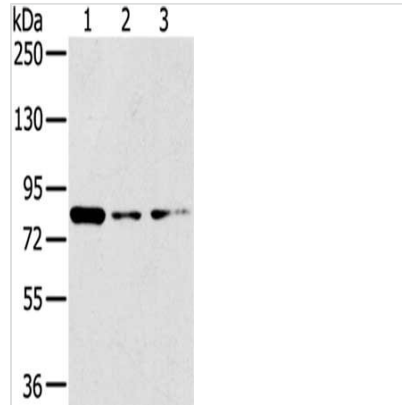
## Image



The image on the left is immunohistochemistry of paraffin-embedded Human esophagus cancer tissue using CSB-PA437630(GPD2 Antibody) at dilution 1/20, on the right is treated with synthetic peptide. (Original magnification: x200)



The image on the left is immunohistochemistry of paraffin-embedded Human thyroid cancer tissue using CSB-PA437630(GPD2 Antibody) at dilution 1/20, on the right is treated with synthetic peptide. (Original magnification: x200)



Gel: 6%SDS-PAGE,Lysate: 40  $\mu$ g,Lane 1-3:  
A172 cells, 231 cells, Hela cells,Primary  
antibody: CSB-PA437630(GPD2 Antibody) at  
dilution 1/200 dilution,Secondary antibody: Goat  
anti rabbit IgG at 1/8000 dilution,Exposure time:  
30 seconds

## Usage

For Research Use Only. Not for use in diagnostic or therapeutic procedures.