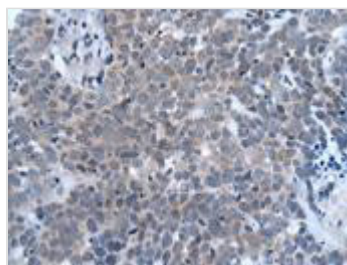




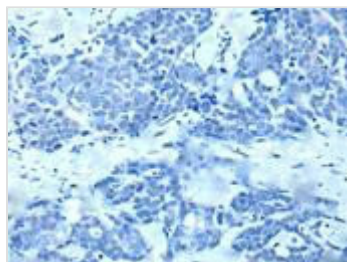
# HES1 Antibody

<b>Product Code</b>	CSB-PA245265
<b>Storage</b>	Upon receipt, store at -20°C or -80°C. Avoid repeated freeze.
<b>Uniprot No.</b>	Q14469
<b>Immunogen</b>	Synthetic peptide of Human HES1
<b>Raised In</b>	Rabbit
<b>Species Reactivity</b>	Human, Mouse, Rat
<b>Tested Applications</b>	ELISA, IHC; Recommended dilution: IHC:1:10-1:50
<b>Form</b>	Liquid
<b>Conjugate</b>	Non-conjugated
<b>Storage Buffer</b>	-20°C, pH7.4 PBS, 0.05% NaN <sub>3</sub> , 40% Glycerol
<b>Purification Method</b>	Antigen affinity purification
<b>Isotype</b>	IgG
<b>Clonality</b>	Polyclonal
<b>Alias</b>	hes family bHLH transcription factor 1; HHL; HRY; HES-1; bHLHb39
<b>Immunogen Species</b>	Homo sapiens (Human)
<b>Research Area</b>	Neuroscience
<b>Target Names</b>	HES1

## Image



Immunohistochemistry of paraffin-embedded human thyroid cancer using CSB-PA245265 at dilution of 1:20



Immunohistochemistry of paraffin-embedded human thyroid cancer (treated with synthetic peptide) using CSB-PA245265 at dilution of 1:20

## Usage

For Research Use Only. Not for use in diagnostic or therapeutic procedures.