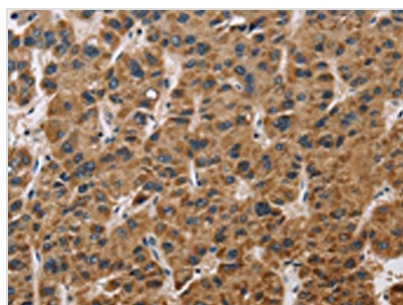




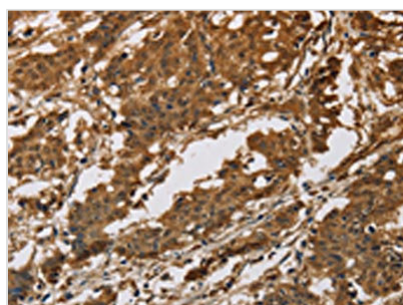
IL19 Antibody

Product Code	CSB-PA155390
Storage	Upon receipt, store at -20°C or -80°C. Avoid repeated freeze.
Uniprot No.	Q9UHD0
Immunogen	Synthetic peptide of Human IL19
Raised In	Rabbit
Species Reactivity	Human
Tested Applications	ELISA,IHC;ELISA:1:2000-1:5000,IHC:1:50-1:200
Form	Liquid
Conjugate	Non-conjugated
Storage Buffer	-20°C, pH7.4 PBS, 0.05% NaN ₃ , 40% Glycerol
Purification Method	Antigen affinity purification
Isotype	IgG
Immunogen Species	Homo sapiens (Human)
Target Names	IL19

Image



The image on the left is immunohistochemistry of paraffin-embedded Human liver cancer tissue using CSB-PA155390(IL19 Antibody) at dilution 1/40, on the right is treated with synthetic peptide. (Original magnification: x200)



The image on the left is immunohistochemistry of paraffin-embedded Human gastric cancer tissue using CSB-PA155390(IL19 Antibody) at dilution 1/40, on the right is treated with synthetic peptide. (Original magnification: x200)