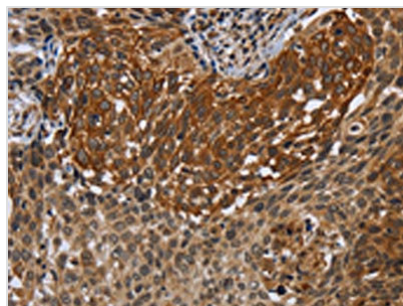




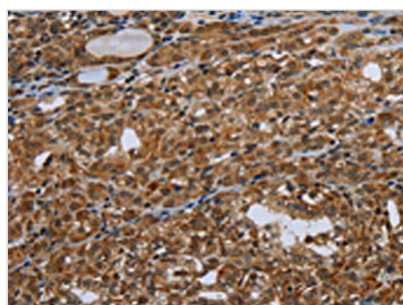
# UHRF2 Antibody

|                            |   |
|----------------------------|---|
| <b>Product Code</b>        | CSB-PA829841  |
| <b>Storage</b>             | Upon receipt, store at -20°C or -80°C. Avoid repeated freeze. |
| <b>Uniprot No.</b>         | Q96PU4  |
| <b>Immunogen</b>           | Synthetic peptide of Human UHRF2                              |
| <b>Raised In</b>           | Rabbit  |
| <b>Species Reactivity</b>  | Human, Mouse  |
| <b>Tested Applications</b> | ELISA, IHC; ELISA: 1:2000-1:5000, IHC: 1:50-1:200             |
| <b>Form</b>                | Liquid  |
| <b>Conjugate</b>           | Non-conjugated  |
| <b>Storage Buffer</b>      | -20°C, pH7.4 PBS, 0.05% NaN <sub>3</sub> , 40% Glycerol       |
| <b>Purification Method</b> | Antigen affinity purification                                 |
| <b>Isotype</b>             | IgG   |
| <b>Immunogen Species</b>   | Homo sapiens (Human)  |
| <b>Target Names</b>        | UHRF2   |

## Image



The image on the left is immunohistochemistry of paraffin-embedded Human cervical cancer tissue using CSB-PA829841 (UHRF2 Antibody) at dilution 1/40, on the right is treated with synthetic peptide. (Original magnification: x200)



The image on the left is immunohistochemistry of paraffin-embedded Human thyroid cancer tissue using CSB-PA829841 (UHRF2 Antibody) at dilution 1/40, on the right is treated with synthetic peptide. (Original magnification: x200)

## Usage

For Research Use Only. Not for use in diagnostic or therapeutic procedures.