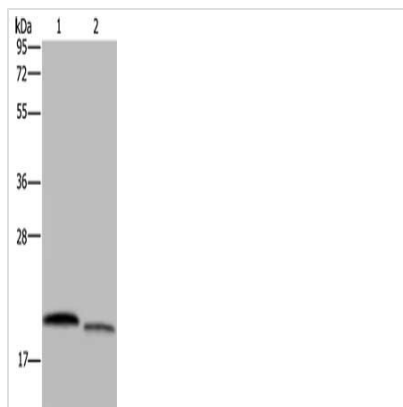




# RHEB Antibody

<b>Product Code</b>	CSB-PA256263
<b>Storage</b>	Upon receipt, store at -20°C or -80°C. Avoid repeated freeze.
<b>Uniprot No.</b>	Q15382
<b>Immunogen</b>	Synthetic peptide of Human RHEB
<b>Raised In</b>	Rabbit
<b>Species Reactivity</b>	Human,Mouse,Rat
<b>Tested Applications</b>	ELISA,WB;ELISA:1:1000-1:2000,WB:1:200-1:1000
<b>Form</b>	Liquid
<b>Conjugate</b>	Non-conjugated
<b>Storage Buffer</b>	-20°C, pH7.4 PBS, 0.05% NaN <sub>3</sub> , 40% Glycerol
<b>Purification Method</b>	Antigen affinity purification
<b>Isotype</b>	IgG
<b>Immunogen Species</b>	Homo sapiens (Human)
<b>Target Names</b>	RHEB

## Image



Gel: 10%SDS-PAGE, Lysate: 40 µg, Lane 1-2: HeLa cells, 231 cells, Primary antibody: CSB-PA256263(RHEB Antibody) at dilution 1/350, Secondary antibody: Goat anti rabbit IgG at 1/8000 dilution, Exposure time: 40 seconds

## Usage

For Research Use Only. Not for use in diagnostic or therapeutic procedures.