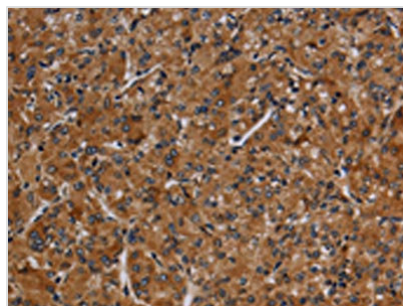




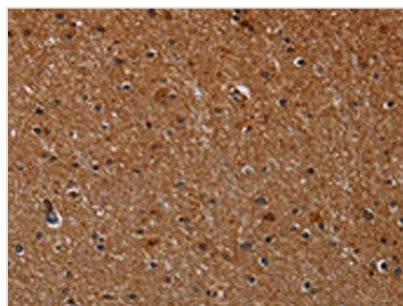
# CYP1A2 Antibody

<b>Product Code</b>	CSB-PA439630
<b>Storage</b>	Upon receipt, store at -20°C or -80°C. Avoid repeated freeze.
<b>Uniprot No.</b>	P05177
<b>Immunogen</b>	Synthetic peptide of Human CYP1A2
<b>Raised In</b>	Rabbit
<b>Species Reactivity</b>	Human
<b>Tested Applications</b>	ELISA,WB,IHC;ELISA:1:2000-1:5000,WB:1:200-1:1000,IHC:1:50-1:200
<b>Form</b>	Liquid
<b>Conjugate</b>	Non-conjugated
<b>Storage Buffer</b>	-20°C, pH7.4 PBS, 0.05% NaN <sub>3</sub> , 40% Glycerol
<b>Purification Method</b>	Antigen affinity purification
<b>Isotype</b>	IgG
<b>Immunogen Species</b>	Homo sapiens (Human)
<b>Target Names</b>	CYP1A2

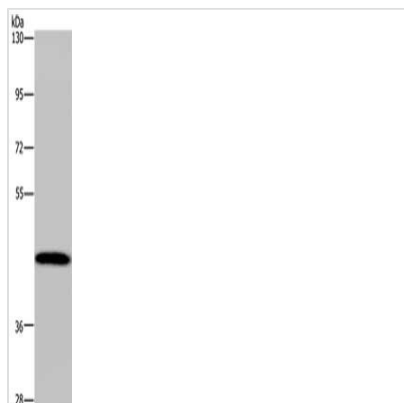
## Image



The image on the left is immunohistochemistry of paraffin-embedded Human prostate cancer tissue using CSB-PA439630(CYP1A2 Antibody) at dilution 1/40, on the right is treated with synthetic peptide. (Original magnification: ×200)



The image on the left is immunohistochemistry of paraffin-embedded Human brain tissue using CSB-PA439630(CYP1A2 Antibody) at dilution 1/40, on the right is treated with synthetic peptide. (Original magnification: ×200)



Gel: 6%SDS-PAGE, Lysate: 40  $\mu$ g, Lane:  
Human hepatocellular carcinoma tissue, Primary  
antibody: CSB-PA439630(CYP1A2 Antibody) at  
dilution 1/440, Secondary antibody: Goat anti  
rabbit IgG at 1/8000 dilution, Exposure time: 3  
minutes