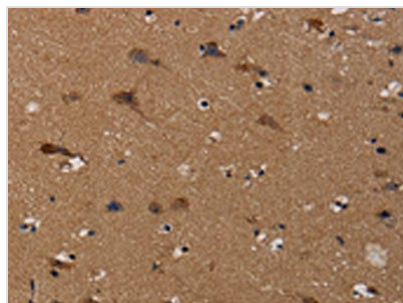




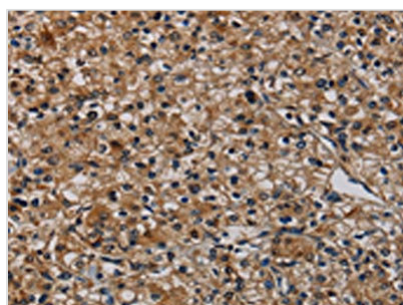
# TP53INP1 Antibody

|                            |   |
|----------------------------|---|
| <b>Product Code</b>        | CSB-PA052632  |
| <b>Storage</b>             | Upon receipt, store at -20°C or -80°C. Avoid repeated freeze.   |
| <b>Uniprot No.</b>         | Q96A56  |
| <b>Immunogen</b>           | Synthetic peptide of Human TP53INP1                             |
| <b>Raised In</b>           | Rabbit  |
| <b>Species Reactivity</b>  | Human   |
| <b>Tested Applications</b> | ELISA,WB,IHC;ELISA:1:1000-1:2000,WB:1:200-1:1000,IHC:1:50-1:200 |
| <b>Form</b>                | Liquid  |
| <b>Conjugate</b>           | Non-conjugated  |
| <b>Storage Buffer</b>      | -20°C, pH7.4 PBS, 0.05% NaN <sub>3</sub> , 40% Glycerol         |
| <b>Purification Method</b> | Antigen affinity purification                                   |
| <b>Isotype</b>             | IgG   |
| <b>Immunogen Species</b>   | Homo sapiens (Human)  |
| <b>Target Names</b>        | TP53INP1  |

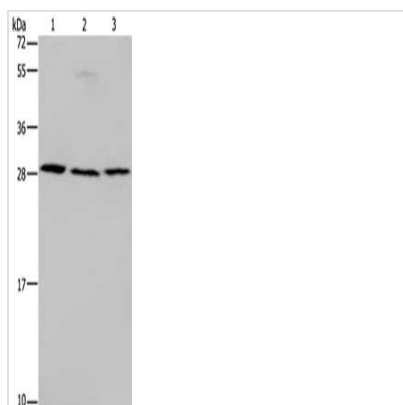
## Image



The image on the left is immunohistochemistry of paraffin-embedded Human brain tissue using CSB-PA052632(TP53INP1 Antibody) at dilution 1/50, on the right is treated with synthetic peptide. (Original magnification: x200)



The image on the left is immunohistochemistry of paraffin-embedded Human prostate cancer tissue using CSB-PA052632(TP53INP1 Antibody) at dilution 1/50, on the right is treated with synthetic peptide. (Original magnification: x200)



Gel: 10%SDS-PAGE, Lysate: 40  $\mu$ g, Lane 1-3:  
 Human fetal liver tissue, 293T cells, 231 cells,  
 Primary antibody: CSB-PA052632(TP53INP1  
 Antibody) at dilution 1/200, Secondary antibody:  
 Goat anti rabbit IgG at 1/8000 dilution, Exposure  
 time: 1 minute