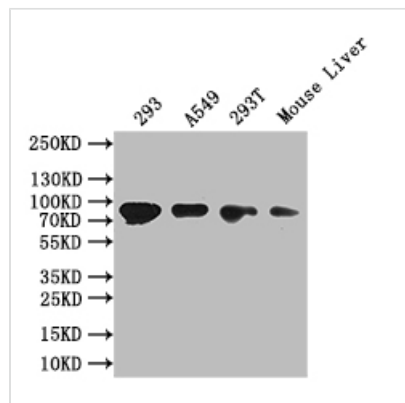




# PROX1 Antibody

<b>Product Code</b>	CSB-PA215840
<b>Storage</b>	Upon receipt, store at -20°C or -80°C. Avoid repeated freeze.
<b>Uniprot No.</b>	Q92786
<b>Immunogen</b>	Synthetic peptide of Human PROX1
<b>Raised In</b>	Rabbit
<b>Species Reactivity</b>	Human, Mouse
<b>Tested Applications</b>	ELISA,WB,IF;ELISA:1:2000-1:5000,WB:1:500-1:2000,IF:1:25-1:100
<b>Form</b>	Liquid
<b>Conjugate</b>	Non-conjugated
<b>Storage Buffer</b>	-20°C, pH7.4 PBS, 0.05% NaN <sub>3</sub> , 40% Glycerol
<b>Purification Method</b>	Antigen affinity purification
<b>Isotype</b>	IgG
<b>Product Type</b>	Polyclonal Antibody
<b>Immunogen Species</b>	Homo sapiens (Human)
<b>Target Names</b>	PROX1

## Image



### Western Blot

Positive WB detected in: 293 whole cell lysate, A549 whole cell lysate, 293T whole cell lysate, Mouse Liver tissue lysate

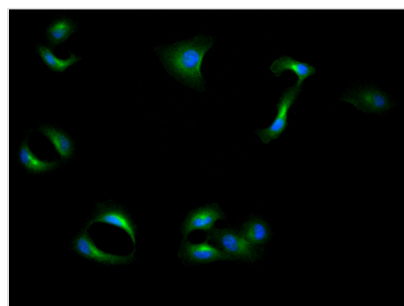
All lanes: PROX1 antibody at 1:1000

### Secondary

Goat polyclonal to rabbit IgG at 1/50000 dilution

Predicted band size: 83 kDa

Observed band size: 83 kDa



Immunofluorescence staining of Hela cell with CSB-PA215840 at 1:30, counter-stained with DAPI. The cells were fixed in 4% for maldehyde and blocked in 10% normal Goat Serum. The cells were then incubated with the antibody overnight at 4°C. The secondary antibody was Alexa Fluor 488-conjugated AffiniPure Goat Anti-Rabbit IgG(H+L).