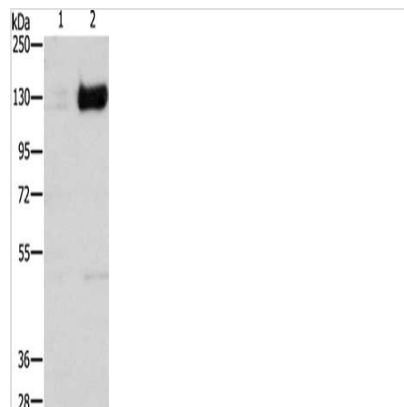




HIF1A Antibody

Product Code	CSB-PA578243
Storage	Upon receipt, store at -20°C or -80°C. Avoid repeated freeze.
Uniprot No.	Q16665
Immunogen	Synthetic peptide of Human HIF1A
Raised In	Rabbit
Species Reactivity	Human,Mouse,Rat
Tested Applications	ELISA,WB;ELISA:1:2000-1:5000,WB:1:500-1:2000
Form	Liquid
Conjugate	Non-conjugated
Storage Buffer	-20°C, pH7.4 PBS, 0.05% NaN ₃ , 40% Glycerol
Purification Method	Antigen affinity purification
Isotype	IgG
Immunogen Species	Homo sapiens (Human)
Target Names	HIF1A

Image



Gel: 8%SDS-PAGE, Lysate: 40 µg, Lane 1-2: 293T cells untreated with cobalt chloride, 293T cells treated with cobalt chloride (0.1 mM for 4 hours), Primary antibody: CSB-PA578243(HIF1A Antibody) at dilution 1/750, Secondary antibody: Goat anti rabbit IgG at 1/8000 dilution, Exposure time: 2 minutes

Usage

For Research Use Only. Not for use in diagnostic or therapeutic procedures.