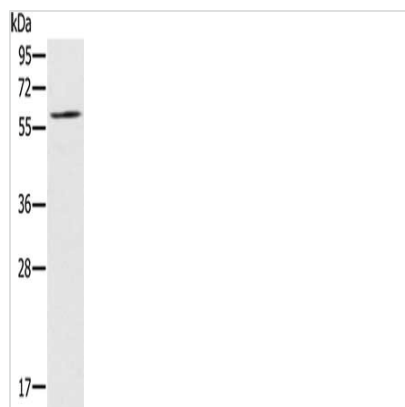




RELB Antibody

Product Code	CSB-PA278867
Storage	Upon receipt, store at -20°C or -80°C. Avoid repeated freeze.
Uniprot No.	Q01201
Immunogen	Synthetic peptide of Human RELB
Raised In	Rabbit
Species Reactivity	Human, Mouse
Tested Applications	ELISA, WB; ELISA: 1:1000-1:2000, WB: 1:200-1:1000
Form	Liquid
Conjugate	Non-conjugated
Storage Buffer	-20°C, pH7.4 PBS, 0.05% NaN ₃ , 40% Glycerol
Purification Method	Antigen affinity purification
Isotype	IgG
Immunogen Species	Homo sapiens (Human)
Target Names	RELB

Image



Gel: 8% SDS-PAGE, Lysate: 40 µg, Lane: NIH/3T3 cells, Primary antibody: CSB-PA278867 (RELB Antibody) at dilution 1/200, Secondary antibody: Goat anti rabbit IgG at 1/8000 dilution, Exposure time: 20 seconds

Usage

For Research Use Only. Not for use in diagnostic or therapeutic procedures.