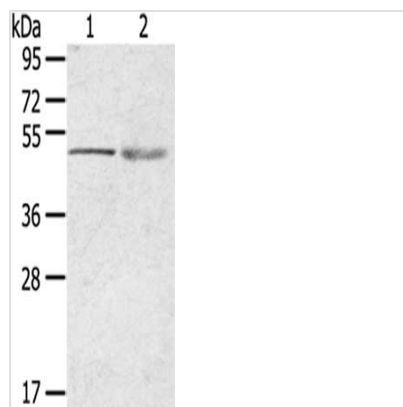




RHCE Antibody

| | |
|----------------------------|---------------------------------------------------------------|
| Product Code | CSB-PA123241 |
| Storage | Upon receipt, store at -20°C or -80°C. Avoid repeated freeze. |
| Uniprot No. | P18577 |
| Immunogen | Synthetic peptide of Human RHCE |
| Raised In | Rabbit |
| Species Reactivity | Human |
| Tested Applications | ELISA,WB;ELISA:1:1000-1:2000,WB:1:200-1:1000 |
| Form | Liquid |
| Conjugate | Non-conjugated |
| Storage Buffer | -20°C, pH7.4 PBS, 0.05% NaN ₃ , 40% Glycerol |
| Purification Method | Antigen affinity purification |
| Isotype | IgG |
| Immunogen Species | Homo sapiens (Human) |
| Target Names | RHCE |

Image



Gel: 8%SDS-PAGE,Lysate: 40 µg,Lane 1-2: 231 cells, Human breast infiltrative duct tissue,Primary antibody: CSB-PA123241(RHCE Antibody) at dilution 1/200 dilution,Secondary antibody: Goat anti rabbit IgG at 1/8000 dilution,Exposure time: 1 minute

Usage

For Research Use Only. Not for use in diagnostic or therapeutic procedures.