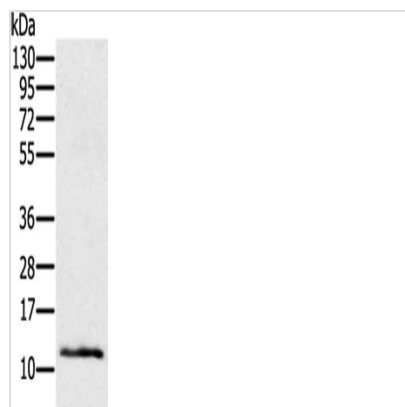




# Ly6a Antibody

<b>Product Code</b>	CSB-PA143897
<b>Storage</b>	Upon receipt, store at -20°C or -80°C. Avoid repeated freeze.
<b>Uniprot No.</b>	P05533
<b>Immunogen</b>	Synthetic peptide of Mouse Ly6a
<b>Raised In</b>	Rabbit
<b>Species Reactivity</b>	Mouse
<b>Tested Applications</b>	ELISA,WB;ELISA:1:1000-1:2000,WB:1:200-1:1000
<b>Form</b>	Liquid
<b>Conjugate</b>	Non-conjugated
<b>Storage Buffer</b>	-20°C, pH7.4 PBS, 0.05% NaN <sub>3</sub> , 40% Glycerol
<b>Purification Method</b>	Antigen affinity purification
<b>Isotype</b>	IgG
<b>Immunogen Species</b>	Mus musculus (Mouse)
<b>Target Names</b>	Ly6a

## Image



Gel: 12%SDS-PAGE, Lysate: 40 µg, Lane: Mouse skin tissue, Primary antibody: CSB-PA143897(Ly6a Antibody) at dilution 1/200, Secondary antibody: Goat anti rabbit IgG at 1/8000 dilution, Exposure time: 2 minutes