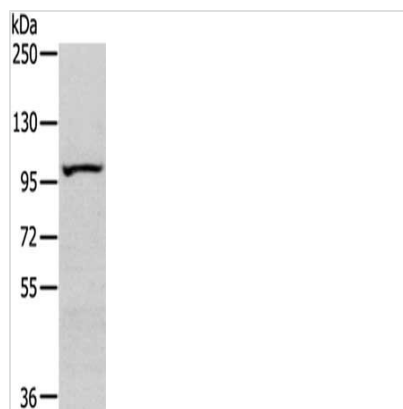




# SENP6 Antibody

<b>Product Code</b>	CSB-PA563802
<b>Storage</b>	Upon receipt, store at -20°C or -80°C. Avoid repeated freeze.
<b>Uniprot No.</b>	Q9GZR1
<b>Immunogen</b>	Synthetic peptide of Human SENP6
<b>Raised In</b>	Rabbit
<b>Species Reactivity</b>	Human,Mouse
<b>Tested Applications</b>	ELISA,WB;ELISA:1:1000-1:2000,WB:1:200-1:1000
<b>Form</b>	Liquid
<b>Conjugate</b>	Non-conjugated
<b>Storage Buffer</b>	-20°C, pH7.4 PBS, 0.05% NaN <sub>3</sub> , 40% Glycerol
<b>Purification Method</b>	Antigen affinity purification
<b>Isotype</b>	IgG
<b>Immunogen Species</b>	Homo sapiens (Human)
<b>Target Names</b>	SENP6

## Image



Gel: 6%SDS-PAGE,Lysate: 40 µg,,Primary antibody: CSB-PA563802(SENP6 Antibody) at dilution 1/450 dilution,Secondary antibody: Goat anti rabbit IgG at 1/8000 dilution,Exposure time: 8 minutes

## Usage

For Research Use Only. Not for use in diagnostic or therapeutic procedures.