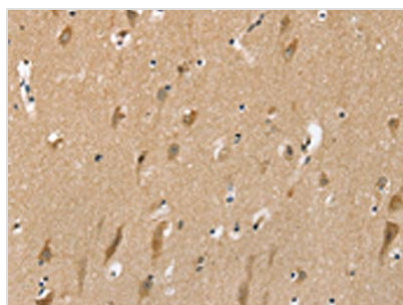




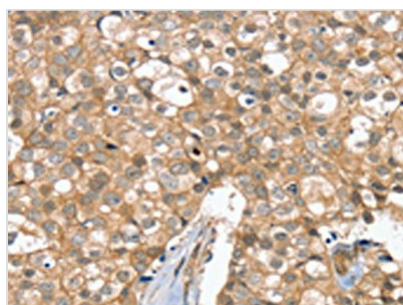
# SLC6A7 Antibody

|                            |   |
|----------------------------|---|
| <b>Product Code</b>        | CSB-PA577390  |
| <b>Storage</b>             | Upon receipt, store at -20°C or -80°C. Avoid repeated freeze. |
| <b>Uniprot No.</b>         | Q99884  |
| <b>Immunogen</b>           | Synthetic peptide of Human SLC6A7                             |
| <b>Raised In</b>           | Rabbit  |
| <b>Species Reactivity</b>  | Human,Rat   |
| <b>Tested Applications</b> | ELISA,IHC;ELISA:1:1000-1:2000,IHC:1:25-1:100                  |
| <b>Form</b>                | Liquid  |
| <b>Conjugate</b>           | Non-conjugated  |
| <b>Storage Buffer</b>      | -20°C, pH7.4 PBS, 0.05% NaN <sub>3</sub> , 40% Glycerol       |
| <b>Purification Method</b> | Antigen affinity purification                                 |
| <b>Isotype</b>             | IgG   |
| <b>Immunogen Species</b>   | Homo sapiens (Human)  |
| <b>Target Names</b>        | SLC6A7  |

## Image



The image on the left is immunohistochemistry of paraffin-embedded Human brain tissue using CSB-PA577390(SLC6A7 Antibody) at dilution 1/30, on the right is treated with synthetic peptide. (Original magnification: x200)



The image on the left is immunohistochemistry of paraffin-embedded Human breast cancer tissue using CSB-PA577390(SLC6A7 Antibody) at dilution 1/30, on the right is treated with synthetic peptide. (Original magnification: x200)

## Usage

For Research Use Only. Not for use in diagnostic or therapeutic procedures.