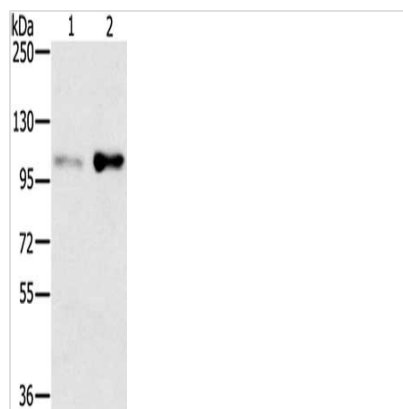




SLTM Antibody

Product Code	CSB-PA181671
Storage	Upon receipt, store at -20°C or -80°C. Avoid repeated freeze.
Uniprot No.	Q9NWH9
Immunogen	Synthetic peptide of Human SLTM
Raised In	Rabbit
Species Reactivity	Human, Mouse
Tested Applications	ELISA, WB; ELISA: 1:2000-1:5000, WB: 1:500-1:2000
Form	Liquid
Conjugate	Non-conjugated
Storage Buffer	-20°C, pH7.4 PBS, 0.05% NaN ₃ , 40% Glycerol
Purification Method	Antigen affinity purification
Isotype	IgG
Immunogen Species	Homo sapiens (Human)
Target Names	SLTM

Image



Gel: 6% SDS-PAGE, Lysate: 40 µg, Lane 1-2: HT29 cells, 293T cells, Primary antibody: CSB-PA181671 (SLTM Antibody) at dilution 1/400, Secondary antibody: Goat anti rabbit IgG at 1/8000 dilution, Exposure time: 2 minutes

Usage

For Research Use Only. Not for use in diagnostic or therapeutic procedures.