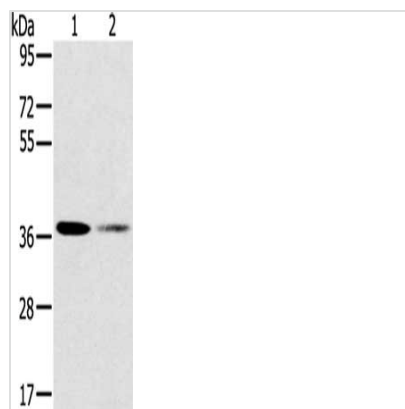




SMN1 Antibody

Product Code	CSB-PA135133
Storage	Upon receipt, store at -20°C or -80°C. Avoid repeated freeze.
Uniprot No.	Q16637
Immunogen	Synthetic peptide of Human SMN1
Raised In	Rabbit
Species Reactivity	Human
Tested Applications	ELISA,WB;ELISA:1:2000-1:5000,WB:1:500-1:2000
Form	Liquid
Conjugate	Non-conjugated
Storage Buffer	-20°C, pH7.4 PBS, 0.05% NaN ₃ , 40% Glycerol
Purification Method	Antigen affinity purification
Isotype	IgG
Immunogen Species	Homo sapiens (Human)
Target Names	SMN1

Image



Gel: 8%SDS-PAGE, Lysate: 40 µg, Lane 1-2: 293T cells, Raji cells, Primary antibody: CSB-PA135133(SMN1 Antibody) at dilution 1/200, Secondary antibody: Goat anti rabbit IgG at 1/8000 dilution, Exposure time: 2 minutes

Usage

For Research Use Only. Not for use in diagnostic or therapeutic procedures.