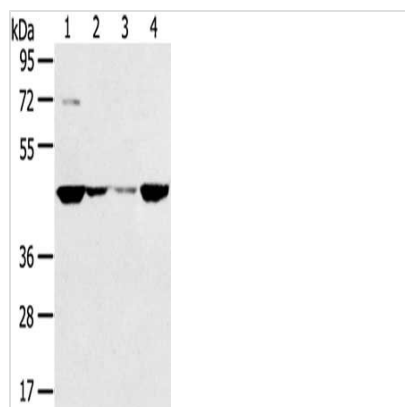




SMYD5 Antibody

Product Code	CSB-PA983901
Storage	Upon receipt, store at -20°C or -80°C. Avoid repeated freeze.
Uniprot No.	Q6GMV2?
Immunogen	Synthetic peptide of Human SMYD5
Raised In	Rabbit
Species Reactivity	Human,Mouse
Tested Applications	ELISA,WB;ELISA:1:2000-1:5000,WB:1:500-1:2000
Form	Liquid
Conjugate	Non-conjugated
Storage Buffer	-20°C, pH7.4 PBS, 0.05% NaN ₃ , 40% Glycerol
Purification Method	Antigen affinity purification
Isotype	IgG
Immunogen Species	Homo sapiens (Human)
Target Names	SMYD5

Image



Gel: 8%SDS-PAGE, Lysate: 40 µg, Lane 1-4:
 HT29 cells, 231 cells, hela cells, A549 cells,
 Primary antibody: CSB-PA983901(SMYD5
 Antibody) at dilution 1/200, Secondary antibody:
 Goat anti rabbit IgG at 1/8000 dilution, Exposure
 time: 1 minute

Usage

For Research Use Only. Not for use in diagnostic or therapeutic procedures.