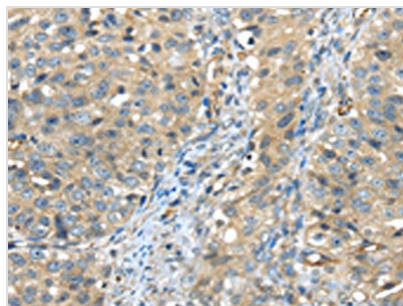




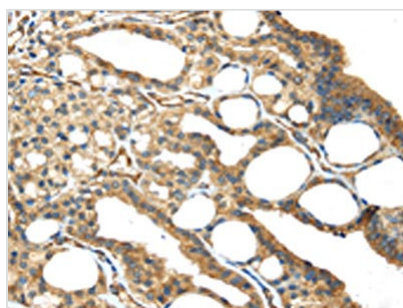
ISM2 Antibody

Product Code	CSB-PA917179
Storage	Upon receipt, store at -20°C or -80°C. Avoid repeated freeze.
Uniprot No.	Q6H9L7
Immunogen	Synthetic peptide of Human ISM2
Raised In	Rabbit
Species Reactivity	Human
Tested Applications	ELISA,WB,IHC;ELISA:1:2000-1:10000,WB:1:1000-1:5000,IHC:1:30-1:150
Form	Liquid
Conjugate	Non-conjugated
Storage Buffer	-20°C, pH7.4 PBS, 0.05% NaN ₃ , 40% Glycerol
Purification Method	Antigen affinity purification
Isotype	IgG
Immunogen Species	Homo sapiens (Human)
Target Names	ISM2

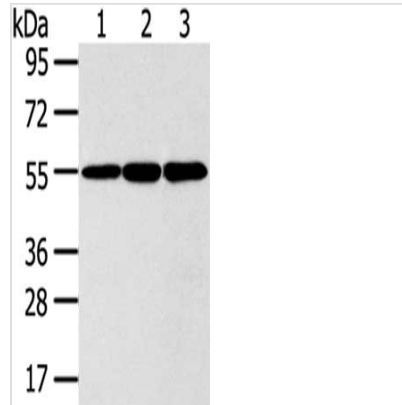
Image



The image on the left is immunohistochemistry of paraffin-embedded Human breast cancer tissue using CSB-PA917179(ISM2 Antibody) at dilution 1/45, on the right is treated with synthetic peptide. (Original magnification: x200)



The image on the left is immunohistochemistry of paraffin-embedded Human thyroid cancer tissue using CSB-PA917179(ISM2 Antibody) at dilution 1/45, on the right is treated with synthetic peptide. (Original magnification: x200)



Gel: 8%SDS-PAGE,Lysate: 40 μ g,Lane 1-3:
293T cells, LO2 cells, Lovo cells,Primary
antibody: CSB-PA917179(ISM2 Antibody) at
dilution 1/300 dilution,Secondary antibody: Goat
anti rabbit IgG at 1/8000 dilution,Exposure time:
5 seconds

Usage

For Research Use Only. Not for use in diagnostic or therapeutic procedures.