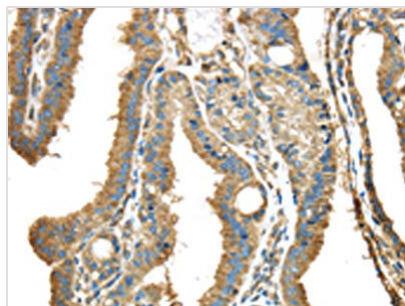




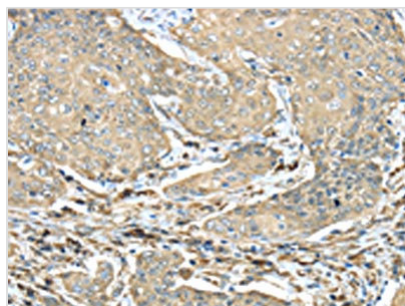
NME2 Antibody

Product Code	CSB-PA578283
Storage	Upon receipt, store at -20°C or -80°C. Avoid repeated freeze.
Uniprot No.	P22392
Immunogen	Synthetic peptide of Human NME2
Raised In	Rabbit
Species Reactivity	Human,Mouse,Rat
Tested Applications	ELISA,WB,IHC;ELISA:1:2000-1:10000,WB:1:1000-1:5000,IHC:1:30-1:150
Form	Liquid
Conjugate	Non-conjugated
Storage Buffer	-20°C, pH7.4 PBS, 0.05% NaN ₃ , 40% Glycerol
Purification Method	Antigen affinity purification
Isotype	IgG
Immunogen Species	Homo sapiens (Human)
Target Names	NME2

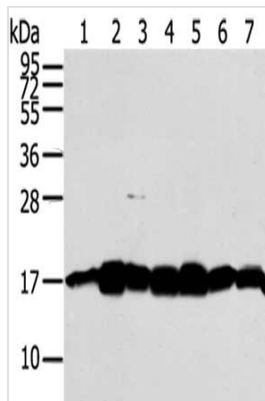
Image



The image on the left is immunohistochemistry of paraffin-embedded Human thyroid cancer tissue using CSB-PA578283(NME2 Antibody) at dilution 1/40, on the right is treated with synthetic peptide. (Original magnification: x200)



The image on the left is immunohistochemistry of paraffin-embedded Human cervical cancer tissue using CSB-PA578283(NME2 Antibody) at dilution 1/40, on the right is treated with synthetic peptide. (Original magnification: x200)



Gel: 12%SDS-PAGE,Lysate: 40 μ g,Lane 1-7:
 Jurkat cells, A549 cells, Mouse brain tissue,
 293T cells, LNCap cells, NIH/3T3 cells, Hela
 cells,Primary antibody: CSB-PA578283(NME2
 Antibody) at dilution 1/300 dilution,Secondary
 antibody: Goat anti rabbit IgG at 1/8000
 dilution,Exposure time: 30 seconds