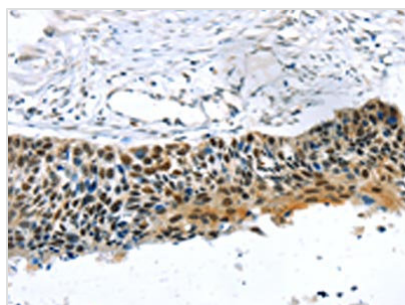




TRERF1 Antibody

| | |
|----------------------------|---|
| Product Code | CSB-PA955880 |
| Storage | Upon receipt, store at -20°C or -80°C. Avoid repeated freeze. |
| Uniprot No. | Q96PN7 |
| Immunogen | Synthetic peptide of Human TRERF1 |
| Raised In | Rabbit |
| Species Reactivity | Human,Mouse |
| Tested Applications | ELISA,IHC;ELISA:1:2000-1:5000,IHC:1:25-1:100 |
| Form | Liquid |
| Conjugate | Non-conjugated |
| Storage Buffer | -20°C, pH7.4 PBS, 0.05% NaN ₃ , 40% Glycerol |
| Purification Method | Antigen affinity purification |
| Isotype | IgG |
| Immunogen Species | Homo sapiens (Human) |
| Target Names | TRERF1 |

Image



The image on the left is immunohistochemistry of paraffin-embedded Human esophagus cancer tissue using CSB-PA955880(TRERF1 Antibody) at dilution 1/20, on the right is treated with synthetic peptide. (Original magnification: x200)

Usage For Research Use Only. Not for use in diagnostic or therapeutic procedures.