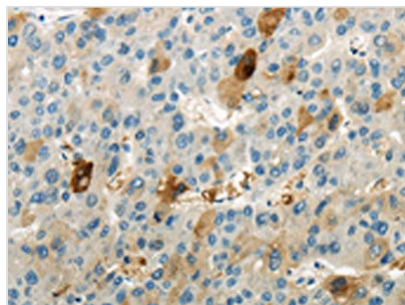




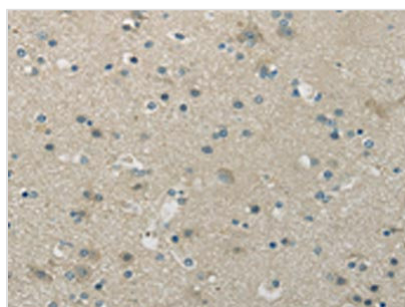
# WNK1 Antibody

<b>Product Code</b>	CSB-PA775879
<b>Storage</b>	Upon receipt, store at -20°C or -80°C. Avoid repeated freeze.
<b>Uniprot No.</b>	Q9H4A3
<b>Immunogen</b>	Synthetic peptide of Human WNK1
<b>Raised In</b>	Rabbit
<b>Species Reactivity</b>	Human,Mouse,Rat
<b>Tested Applications</b>	ELISA,WB,IHC;ELISA:1:1000-1:2000,WB:1:200-1:1000,IHC:1:10-1:50
<b>Form</b>	Liquid
<b>Conjugate</b>	Non-conjugated
<b>Storage Buffer</b>	-20°C, pH7.4 PBS, 0.05% NaN <sub>3</sub> , 40% Glycerol
<b>Purification Method</b>	Antigen affinity purification
<b>Isotype</b>	IgG
<b>Alias</b>	WNK lysine deficient protein kinase 1
<b>Immunogen Species</b>	Homo sapiens (Human)
<b>Target Names</b>	WNK1

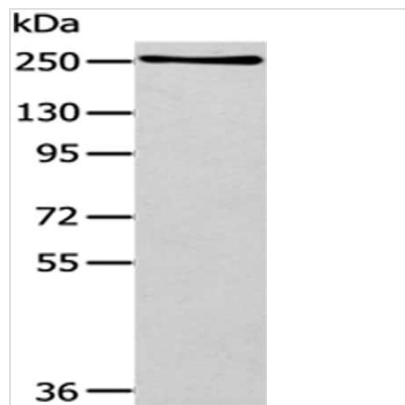
## Image



The image is immunohistochemistry of paraffin-embedded human liver cancer tissue using CSB-PA775879(WNK1 Antibody) at dilution 1/20. (Original magnification: x200)



The image is immunohistochemistry of paraffin-embedded human brain tissue using CSB-PA775879(WNK1 Antibody) at dilution 1/20. (Original magnification: x200)



Gel: 6%SDS-PAGE,Lysate: 40  $\mu$ g,,Primary antibody: CSB-PA775879(WNK1 Antibody) at dilution 1/200 dilution,Secondary antibody: Goat anti rabbit IgG at 1/8000 dilution,Exposure time: 2 minutes

## Usage

For Research Use Only. Not for use in diagnostic or therapeutic procedures.