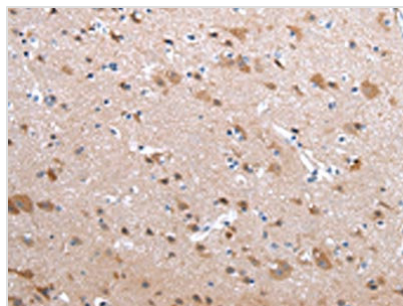




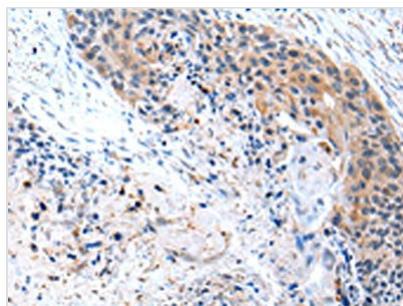
CFC1 Antibody

Product Code	CSB-PA120126
Storage	Upon receipt, store at -20°C or -80°C. Avoid repeated freeze.
Uniprot No.	P0CG37
Immunogen	Synthetic peptide of Human CFC1
Raised In	Rabbit
Species Reactivity	Human
Tested Applications	ELISA,WB,IHC;ELISA:1:1000-1:2000,WB:1:200-1:1000,IHC:1:20-1:100
Form	Liquid
Conjugate	Non-conjugated
Storage Buffer	-20°C, pH7.4 PBS, 0.05% NaN ₃ , 40% Glycerol
Purification Method	Antigen affinity purification
Isotype	IgG
Immunogen Species	Homo sapiens (Human)
Target Names	CFC1

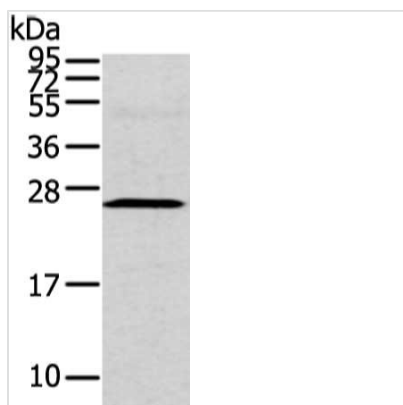
Image



The image on the left is immunohistochemistry of paraffin-embedded Human brain tissue using CSB-PA120126(CFC1 Antibody) at dilution 1/20, on the right is treated with synthetic peptide. (Original magnification: ×200)



The image on the left is immunohistochemistry of paraffin-embedded Human esophagus cancer tissue using CSB-PA120126(CFC1 Antibody) at dilution 1/20, on the right is treated with synthetic peptide. (Original magnification: ×200)



Gel: 12%SDS-PAGE, Lysate: 40 μ g, Lane:
 Human fetal intestines tissue, Primary antibody:
 CSB-PA120126(CFC1 Antibody) at dilution
 1/200 dilution, Secondary antibody: Goat anti
 rabbit IgG at 1/8000 dilution, Exposure time: 2
 minutes