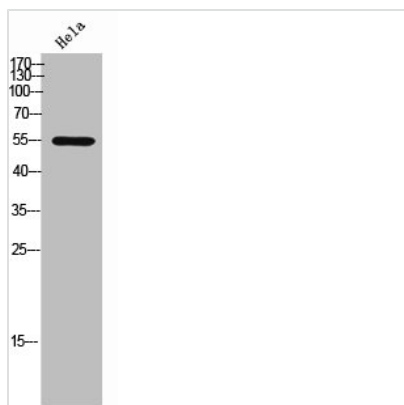




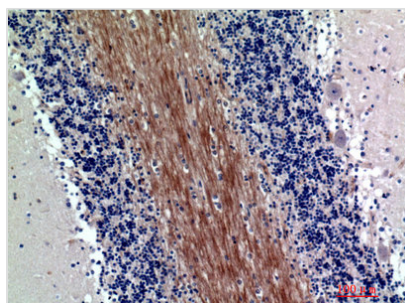
# SIRPA/SIRPB1 Antibody

<b>Product Code</b>	CSB-PA006284
<b>Storage</b>	Upon receipt, store at -20°C or -80°C. Avoid repeated freeze.
<b>Uniprot No.</b>	P78324/Q5TFQ8
<b>Immunogen</b>	Synthesized peptide derived from the Internal region of Human SIRP- $\alpha$ 1/ $\beta$ 1.
<b>Raised In</b>	Rabbit
<b>Species Reactivity</b>	Human
<b>Tested Applications</b>	WB, ELISA; WB:1:500-1:2000, ELISA:1:10000
<b>Form</b>	Liquid
<b>Conjugate</b>	Non-conjugated
<b>Storage Buffer</b>	Liquid in PBS containing 50% glycerol, 0.5% BSA and 0.02% sodium azide.
<b>Purification Method</b>	The antibody was affinity-purified from rabbit antiserum by affinity-chromatography using epitope-specific immunogen.
<b>Isotype</b>	IgG
<b>Alias</b>	SIRPA; BIT; MFR; MYD1; PTPNS1; SHPS1; SIRP; Tyrosine-protein phosphatase non-receptor type substrate 1; SHP substrate 1; SHPS-1; Brain Ig-like molecule with tyrosine-based activation motifs; Bit; CD172 antigen-like family member A; Inhibitory receptor SHP
<b>Immunogen Species</b>	Homo sapiens (Human)
<b>Target Names</b>	SIRPA/SIRPB1

## Image



Western Blot analysis of HeLa cells using SIRP- $\alpha$ 1/ $\beta$ 1 Polyclonal Antibody



Immunohistochemical analysis of paraffin-embedded human-brain, antibody was diluted at 1:200



---

**Usage**

For Research Use Only. Not for use in diagnostic or therapeutic procedures.