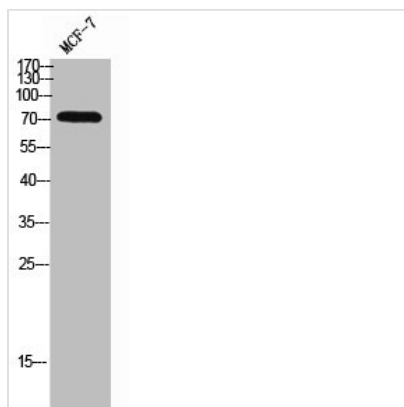




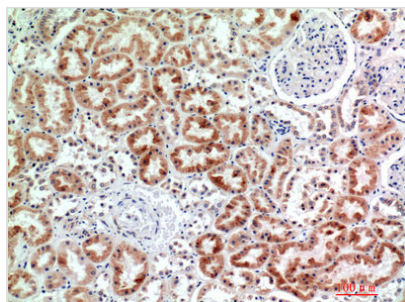
EMR2 Antibody

Product Code	CSB-PA006285
Storage	Upon receipt, store at -20°C or -80°C. Avoid repeated freeze.
Uniprot No.	Q9UHX3
Immunogen	Synthesized peptide derived from the Internal region of Human EMR2.
Raised In	Rabbit
Species Reactivity	Human
Tested Applications	WB, ELISA; WB:1:500-1:2000, ELISA:1:10000
Form	Liquid
Conjugate	Non-conjugated
Storage Buffer	Liquid in PBS containing 50% glycerol, 0.5% BSA and 0.02% sodium azide.
Purification Method	The antibody was affinity-purified from rabbit antiserum by affinity-chromatography using epitope-specific immunogen.
Isotype	IgG
Alias	EMR2; EGF-like module-containing mucin-like hormone receptor-like 2; EGF-like module receptor 2; CD312
Immunogen Species	Homo sapiens (Human)
Target Names	ADGRE2

Image



Western Blot analysis of MCF-7 cells using EMR2 Polyclonal Antibody



Immunohistochemical analysis of paraffin-embedded human-kidney, antibody was diluted at 1:200