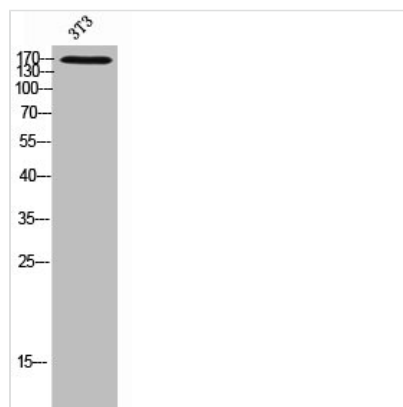




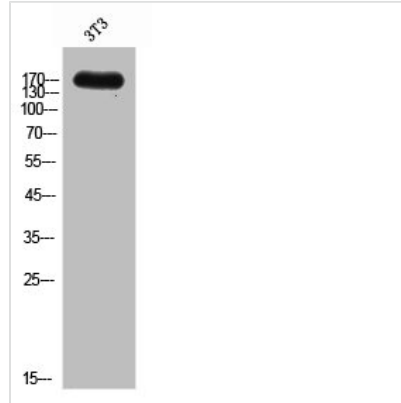
MRC1 Antibody

Product Code	CSB-PA006303
Storage	Upon receipt, store at -20°C or -80°C. Avoid repeated freeze.
Uniprot No.	P22897
Immunogen	Synthesized peptide derived from the Internal region of Human CD206.
Raised In	Rabbit
Species Reactivity	Human
Tested Applications	WB, ELISA; WB:1:500-1:2000, ELISA:1:10000
Form	Liquid
Conjugate	Non-conjugated
Storage Buffer	Liquid in PBS containing 50% glycerol, 0.5% BSA and 0.02% sodium azide.
Purification Method	The antibody was affinity-purified from rabbit antiserum by affinity-chromatography using epitope-specific immunogen.
Isotype	IgG
Alias	MRC1; CLEC13D; CLEC13DL; MRC1L1; Macrophage mannose receptor 1; MMR; C-type lectin domain family 13 member D; C-type lectin domain family 13 member D-like; Macrophage mannose receptor 1-like protein 1; CD206
Immunogen Species	Homo sapiens (Human)
Target Names	MRC1

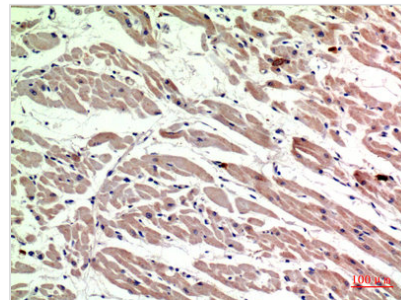
Image



Western Blot analysis of 3T3 cells using CD206 Polyclonal Antibody



Western Blot analysis of NIH-3T3 cells using CD206 Polyclonal Antibody



Immunohistochemical analysis of paraffin-embedded human-heart, antibody was diluted at 1:200

Usage

For Research Use Only. Not for use in diagnostic or therapeutic procedures.