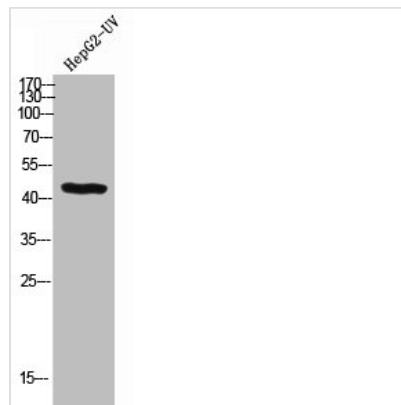




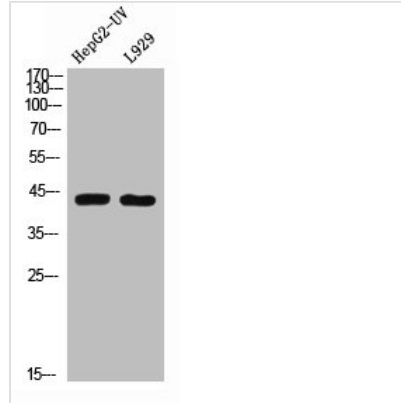
BMP2 Antibody

Product Code	CSB-PA006331
Storage	Upon receipt, store at -20°C or -80°C. Avoid repeated freeze.
Uniprot No.	P12643
Immunogen	Synthesized peptide derived from the C-terminal region of Human BMP-2.
Raised In	Rabbit
Species Reactivity	Human,Mouse,Rat
Tested Applications	WB, ELISA; WB:1:500-1:2000, ELISA:1:10000
Form	Liquid
Conjugate	Non-conjugated
Storage Buffer	Liquid in PBS containing 50% glycerol, 0.5% BSA and 0.02% sodium azide.
Purification Method	The antibody was affinity-purified from rabbit antiserum by affinity-chromatography using epitope-specific immunogen.
Isotype	IgG
Alias	BMP2; BMP2A; Bone morphogenetic protein 2; BMP-2; Bone morphogenetic protein 2A; BMP-2A
Immunogen Species	Homo sapiens (Human)
Target Names	BMP2

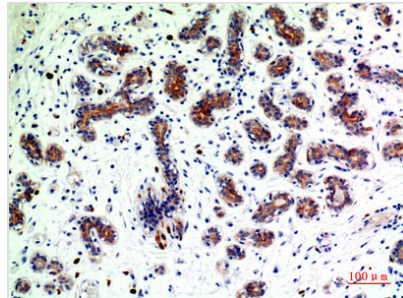
Image



Western Blot analysis of HEPG2-UV cells using BMP-2 Polyclonal Antibody



Western Blot analysis of HepG2-UV L929 cells using BMP-2 Polyclonal Antibody



Immunohistochemical analysis of paraffin-embedded human-breast-cancer, antibody was diluted at 1:200