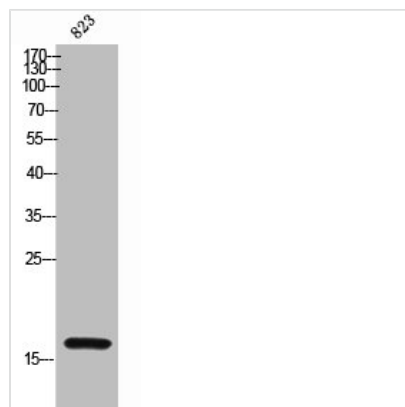




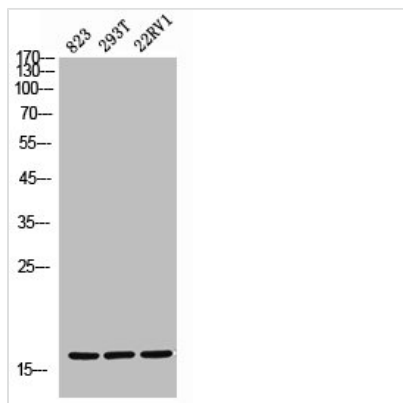
GYPA Antibody

Product Code	CSB-PA006301
Storage	Upon receipt, store at -20°C or -80°C. Avoid repeated freeze.
Uniprot No.	P02724
Immunogen	Synthesized peptide derived from the Internal region of Human CD235a.
Raised In	Rabbit
Species Reactivity	Human
Tested Applications	WB, ELISA; WB:1:500-1:2000, ELISA:1:10000
Form	Liquid
Conjugate	Non-conjugated
Storage Buffer	Liquid in PBS containing 50% glycerol, 0.5% BSA and 0.02% sodium azide.
Purification Method	The antibody was affinity-purified from rabbit antiserum by affinity-chromatography using epitope-specific immunogen.
Isotype	IgG
Alias	GYPA; GPA; Glycophorin-A; MN sialoglycoprotein; PAS-2; Sialoglycoprotein alpha; CD235a
Immunogen Species	Homo sapiens (Human)
Target Names	GYPA

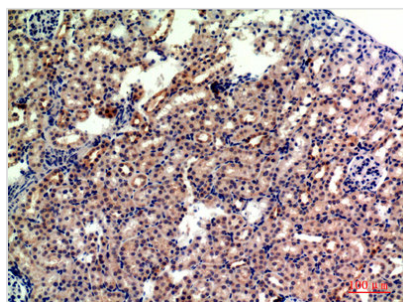
Image



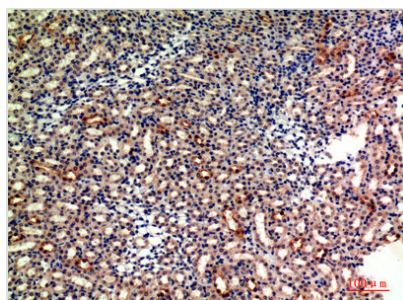
Western Blot analysis of 823 cells using CD235a Polyclonal Antibody



Western Blot analysis of 823 293T 22RV cells using CD235a Polyclonal Antibody



Immunohistochemical analysis of paraffin-embedded mouse-kidney, antibody was diluted at 1:200



Immunohistochemical analysis of paraffin-embedded mouse-kidney, antibody was diluted at 1:200