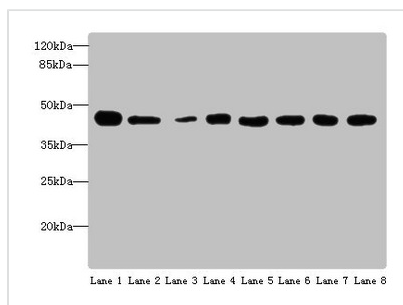




ACTL6A Antibody

| | |
|----------------------------|--|
| Product Code | CSB-PA001236ESR2HU |
| Storage | Upon receipt, store at -20°C or -80°C. Avoid repeated freeze. |
| Uniprot No. | O96019 |
| Immunogen | Recombinant Human Actin-like protein 6A protein (1-280AA) |
| Raised In | Rabbit |
| Species Reactivity | Human, Mouse |
| Tested Applications | ELISA, WB, IHC, ChIP; Recommended dilution: WB:1:1000-1:5000, IHC:1:20-1:200 |
| Form | Liquid |
| Conjugate | Non-conjugated |
| Storage Buffer | PBS with 0.02% sodium azide, 50% glycerol, pH7.3. |
| Purification Method | Antigen Affinity Purified |
| Isotype | IgG |
| Clonality | Polyclonal |
| Alias | Actin-like protein 6A (53 kDa BRG1-associated factor A) (Actin-related protein Baf53a) (ArpNbeta) (BRG1-associated factor 53A) (BAF53A) (INO80 complex subunit K), ACTL6A, BAF53 BAF53A INO80K |
| Immunogen Species | Homo sapiens (Human) |
| Research Area | Epigenetics and Nuclear Signaling |
| Target Names | ACTL6A |

Image



Western blot

All lanes: ACTL6A antibody at 4 µg/ml

Lane 1: Mouse thymus tissue

Lane 2: Mouse spleen tissue

Lane 3: Mouse heart tissue

Lane 4: Jurkats whole cell lysate

Lane 5: K562 whole cell lysate

Lane 6: Hela whole cell lysate

Lane 7: A549 whole cell lysate

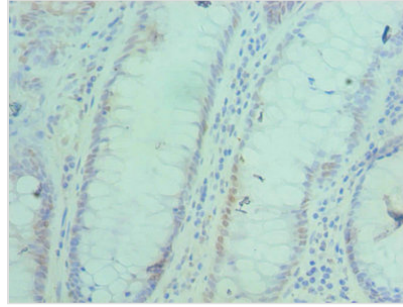
Lane 8: MCF-7 whole cell lysate

Secondary

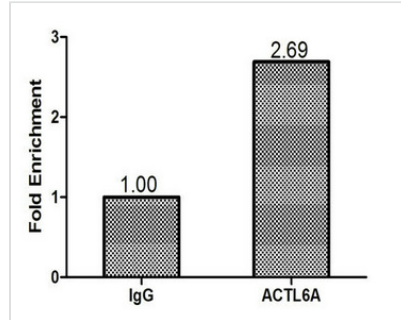
Goat polyclonal to rabbit IgG at 1/10000 dilution

Predicted band size: 48, 44 kDa

Observed band size: 48 kDa



Immunohistochemistry of paraffin-embedded human colon cancer using CSB-PA001236ESR2HU at dilution of 1:100



Chromatin Immunoprecipitation MCF-7 (1.1×10^6) were cross-linked with formaldehyde, sonicated, and immunoprecipitated with $4 \mu\text{g}$ anti-ACTL6A or a control normal rabbit IgG. The resulting ChIP DNA was quantified using real-time PCR with primers (CSB-PP001236HU) against the TFF1 promoter.

Usage

For Research Use Only. Not for use in diagnostic or therapeutic procedures.