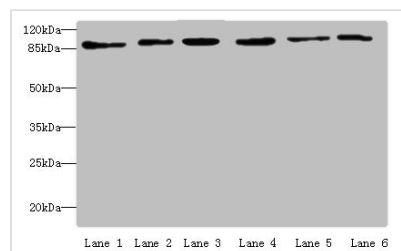




MCM3 Antibody

Product Code	CSB-PA013591ESR1HU
Storage	Upon receipt, store at -20°C or -80°C. Avoid repeated freeze.
Uniprot No.	P25205
Immunogen	Recombinant Human DNA replication licensing factor MCM3 protein (1-295AA)
Raised In	Rabbit
Species Reactivity	Human
Tested Applications	ELISA, WB, IHC, ChIP; Recommended dilution: WB:1:1000-1:5000, IHC:1:20-1:200
Form	Liquid
Conjugate	Non-conjugated
Storage Buffer	PBS with 0.02% sodium azide, 50% glycerol, pH7.3.
Purification Method	Antigen Affinity Purified
Isotype	IgG
Clonality	Polyclonal
Alias	DNA replication licensing factor MCM3 (EC 3.6.4.12) (DNA polymerase alpha holoenzyme-associated protein P1) (P1-MCM3) (RLF subunit beta) (p102), MCM3
Immunogen Species	Homo sapiens (Human)
Research Area	Epigenetics and Nuclear Signaling
Target Names	MCM3

Image



Western blot

All lanes: MCM3 antibody at 4 µg/ml

Lane 1: HeLa whole cell lysate

Lane 2: 293T whole cell lysate

Lane 3: K562 whole cell lysate

Lane 4: HepG2 whole cell lysate

Lane 5: Jurkats whole cell lysate

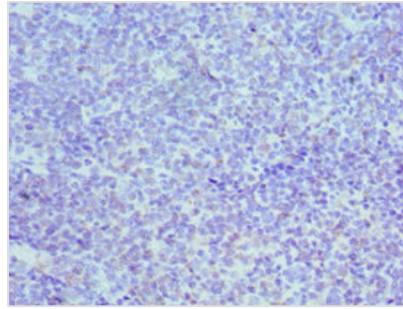
Lane 6: U917 whole cell lysate

Secondary

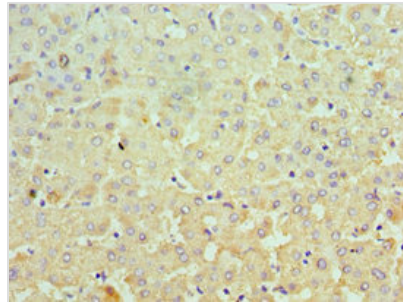
Goat polyclonal to rabbit IgG at 1/10000 dilution

Predicted band size: 91, 96 kDa

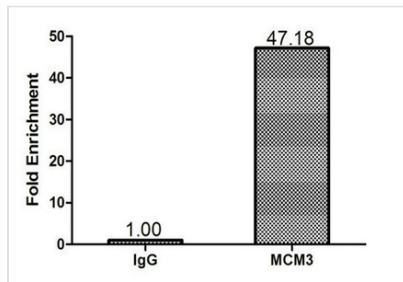
Observed band size: 91 kDa



Immunohistochemistry of paraffin-embedded human tonsil tissue using CSB-PA013591ESR1HU at dilution of 1:100



Immunohistochemistry of paraffin-embedded human liver tissue using CSB-PA013591ESR1HU at dilution of 1:100



Chromatin Immunoprecipitation 293T (1.6×10^6) were cross-linked with formaldehyde, sonicated, and immunoprecipitated with $4\mu\text{g}$ anti-MCM3 or a control normal rabbit IgG. The resulting ChIP DNA was quantified using real-time PCR with primers (CSB-PP013591HU) against the IRF-1 promoter.